



Plate 78: Change in wall composition on Milltown Road near junction with Sandford Road. Rubble wall is rendered and meets later pier

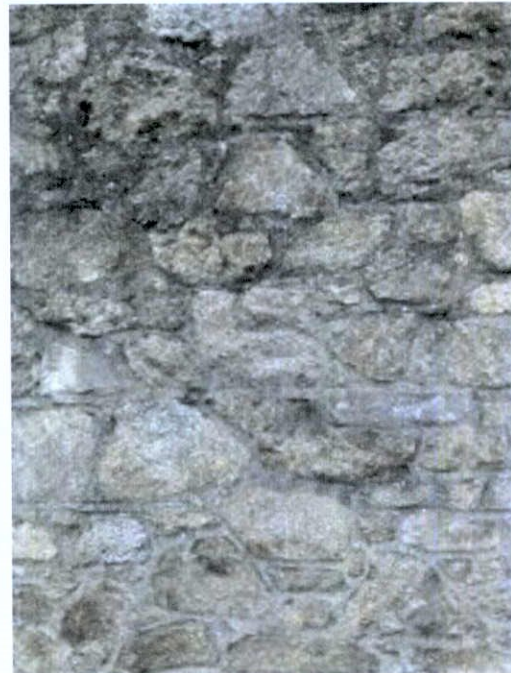


Plate 79: Composition of boundary wall varies, sections of rubble wall have been infilled



Plate 80: Curve of wall looking up Milltown Road towards new entrance, note multiple pointing types cement repairs to rubble wall



Plate 81: Curve of wall looking down Milltown Road, with pedestrian gate in centre



Plate 82: Entrance from Milltown Road



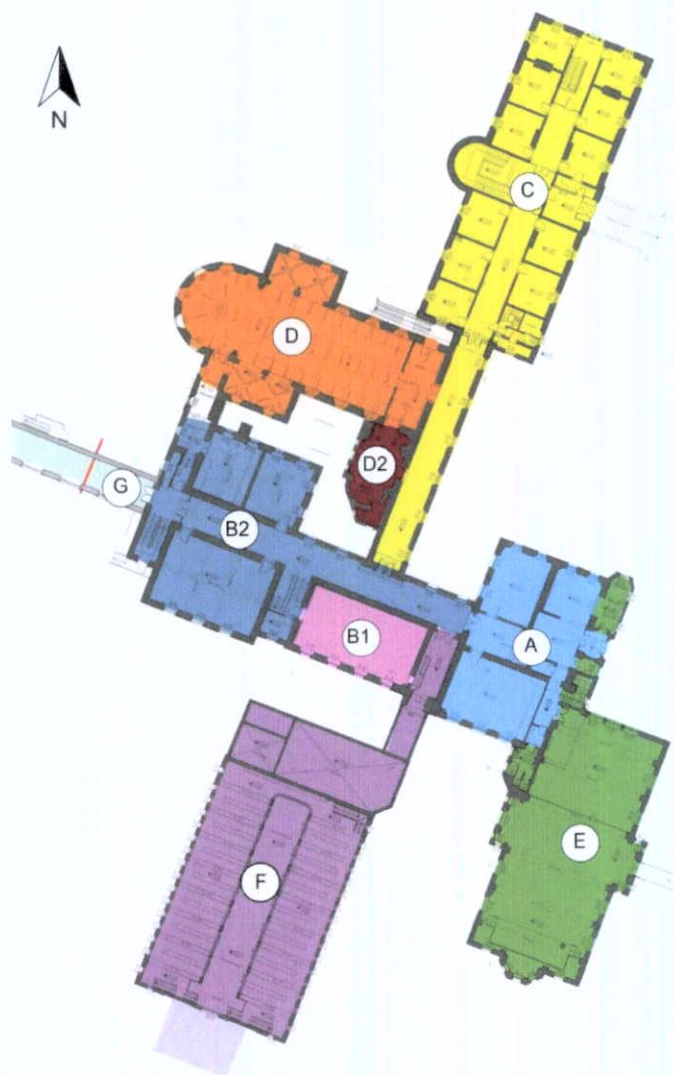
Plate 83: View of range of buildings on site looking north west down Milltown Road

APPENDIX A7.2.9

BUILDING A

MILLTOWN PARK HOUSE – INTERNAL IMAGES

- A Milltown Park House
- B Rear Extension
- C Tabor House
- D Chapel
- E Finlay Wing
- F Archive
- G Link



A7.2.9.1. Entrance Level



Plate 84: Reception area on entering main entrance to Milltown Park House from original front lobby



Plate 85: Entrance door of Milltown Park House with cobweb fanlight visible



Plate 86: Facing south east, view of later stair to 1st floor from rear of reception area



Plate 87: Entrance vestibule which was previously a small chapel, Holy Rosary Chapel used for personal prayer

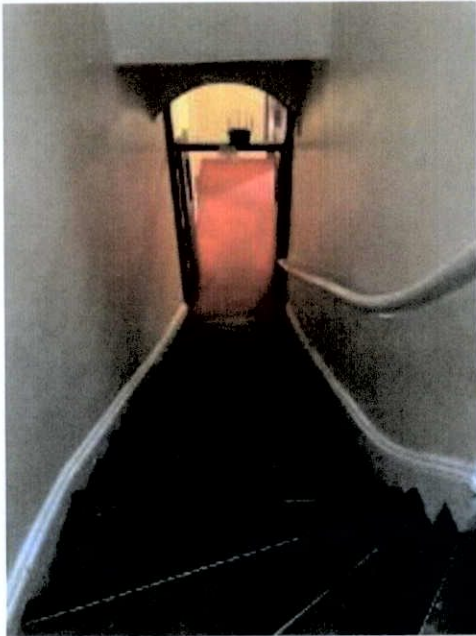


Plate 88: Later stair to 1st floor from rear of reception area

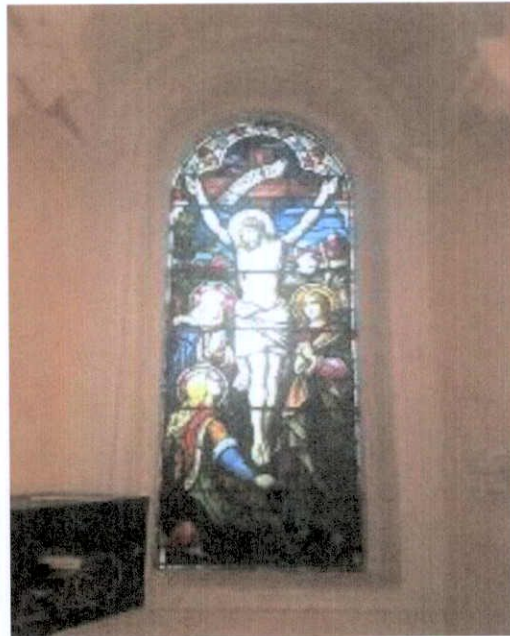


Plate 89: Crucifixion stained glass by Joshua Clarke, Clarke Studios

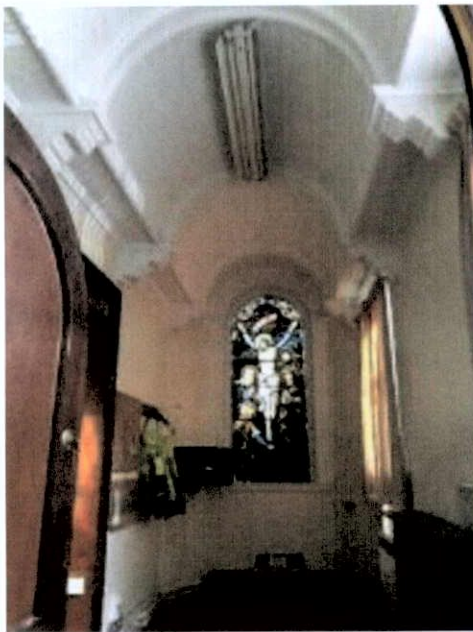


Plate 90: Vestibule/Holy Rosary Chapel, due north towards the apse and stained glass window

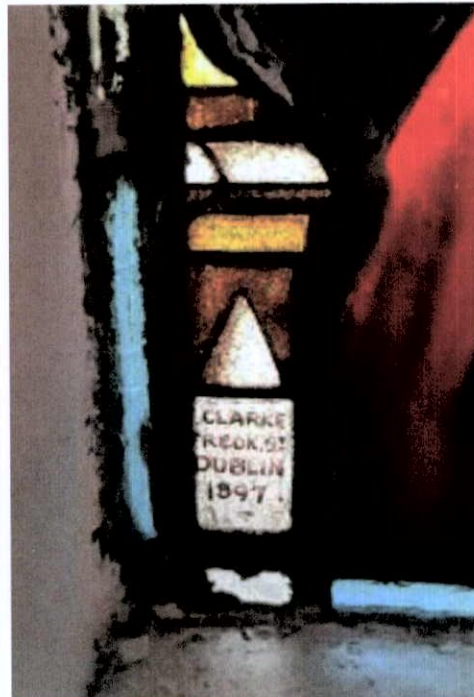


Plate 91: Stained glass signed CLARKE FREDK. ST DUBLIN 1897



Plate 92: Reception room to northeast off entrance hall. Some original features remain



Plate 93: Sliding shutter to vestibule in same room



Plate 94: Fireplace and stuccoed cornice in same room

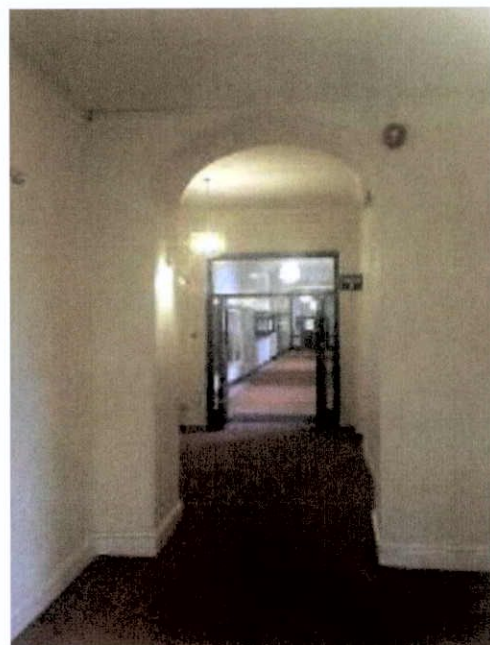


Plate 95: Connection with rear extension block, from rear of entrance hall, with dormitories and study rooms on either side of hall



Plate 96: Storage area to left on entering main door, within later single storey extension to the front of the house



Plate 97: Link within same extension connecting the reception area to the Finlay Wing



Plate 98: Large room within the former Orangery to the south with full height ceiling, missing fireplace, and more recently in use as kitchen/diner



Plate 99: Historical features such as decorative plasterwork and fireplace removed.

A7.2.9.2. Basement Level

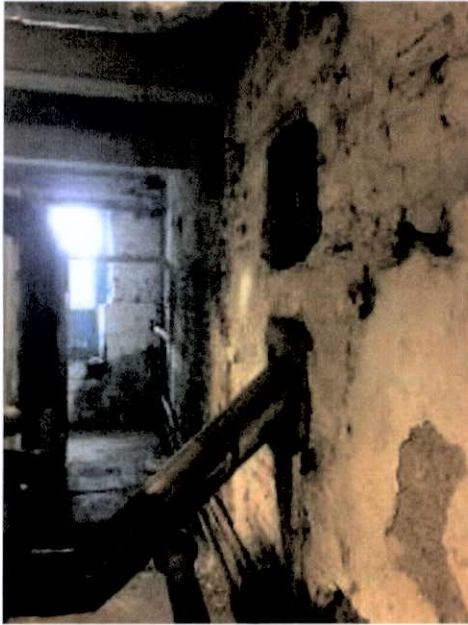


Plate 100: Former kitchen to northwest at basement level, with original masonry and floor flags evident. Note concrete downstand beam for concrete floor plate supporting entrance level above



Plate 101: View east in same room



Plate 102: Note multiple layers of intervention; infilled masonry and brick arch-headed opening, later concrete structure



Plate 102a, b: 18th century fabric within basement level accommodation

A7.2.9.3. First Floor Level



Plate 103: Corridor within first floor extension above original orangery to south



Plate 104: Archway leading to stairs to entrance level



Plate 105: First floor level infilled entrance hall with later stairs leading to vertical extension.



Plate 106: Later stairs to upper level of Milltown Park House



Plate 107: Lobby within MPH, picture rail and panelled door.



Plate 108: Stair access from 1st floor level of Milltown Park House to rear extension block, from within a modified rear room to southwest



Plate 109: As previous, opposing view

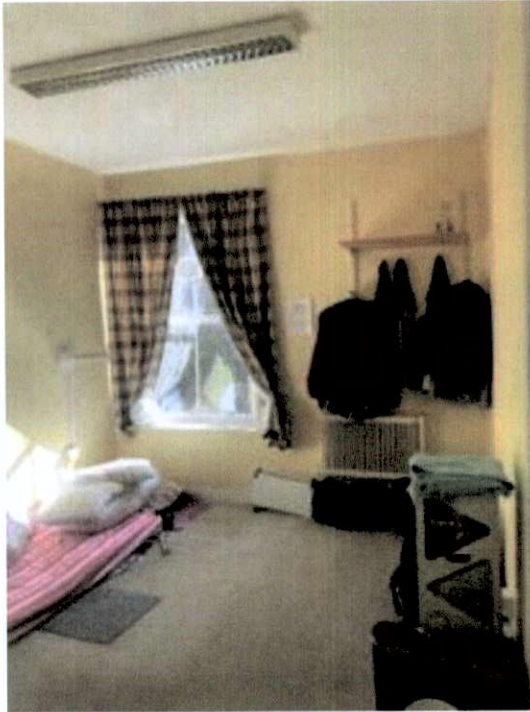


Plate 110: Typical room within first floor of MPH.



Plate 111: Modified upper level. Dropdown beam supporting vertical extension over. View facing south-west. Contemporary linings and loss of original layout evident.



Plate 112: Typical cellular room on the upper level. Panelled door, six-over-six sash window with moulded architrave. No decorative plasterwork.



Plate 113: Panelled door to bathroom, projected above main entrance on front, south-east facing elevation.



Plate 114: Typical cellular room on the upper level. Panelled door, sash window with moulded architrave. No decorative plasterwork.



Plate 115: Simple mantel to chimneypiece, not in use. Panelled door to alcove store.



Plate 116: Amalgamated room, with beam supporting structure on level over. Evidence of water ingress. Exposed services. No chimneypiece or historic plasterwork.

A7.2.9.4. Second Floor Level



Plate 117:: Stairs from first floor viewing up



Plate 118: Level 2 Landing within MPH with mahogany painted stair rail. No decorative plasterwork.



Plate 119: Level 2 landing facing south-east towards front elevation.



Plate 120: Level 2 landing facing south.



Plate 121: Internal circulation within the uppermost level of Milltown Park House



Plate 122: Central hall at 2nd floor level linking to rear extension block. Note water tank room to lhs of image which extends up into roof void



Plate 123: Opening up investigations to uncover brick substrate.

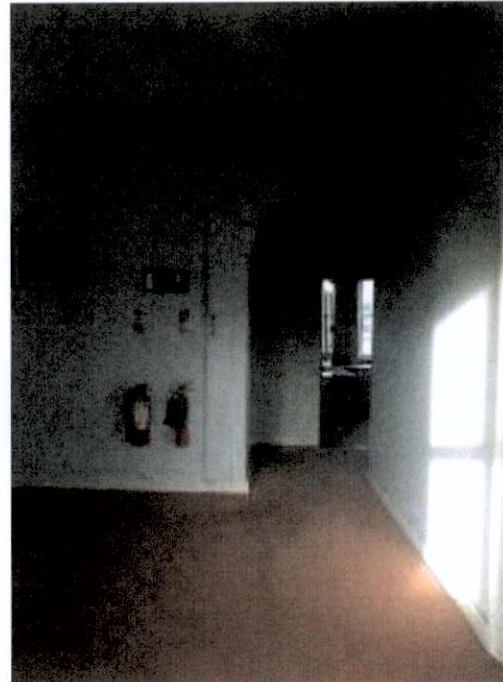


Plate 124: Access to rooms within southern extension of main house

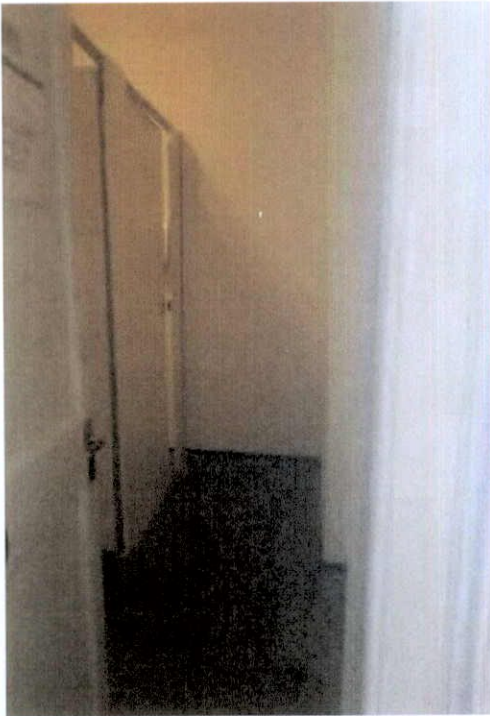


Plate 125: Toilets with front extension to south-east, above original entrance porch



Plate 126: Sample room within vertical extension above main house. Note water ingress from breaches at roof level

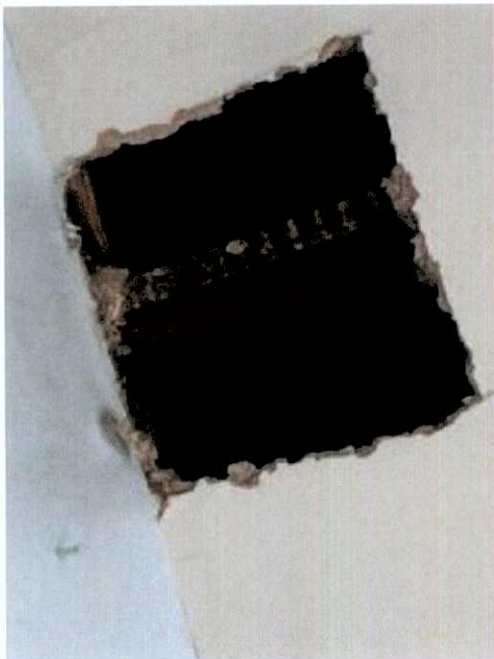


Plate 127: Cut timber roof structure above MPH

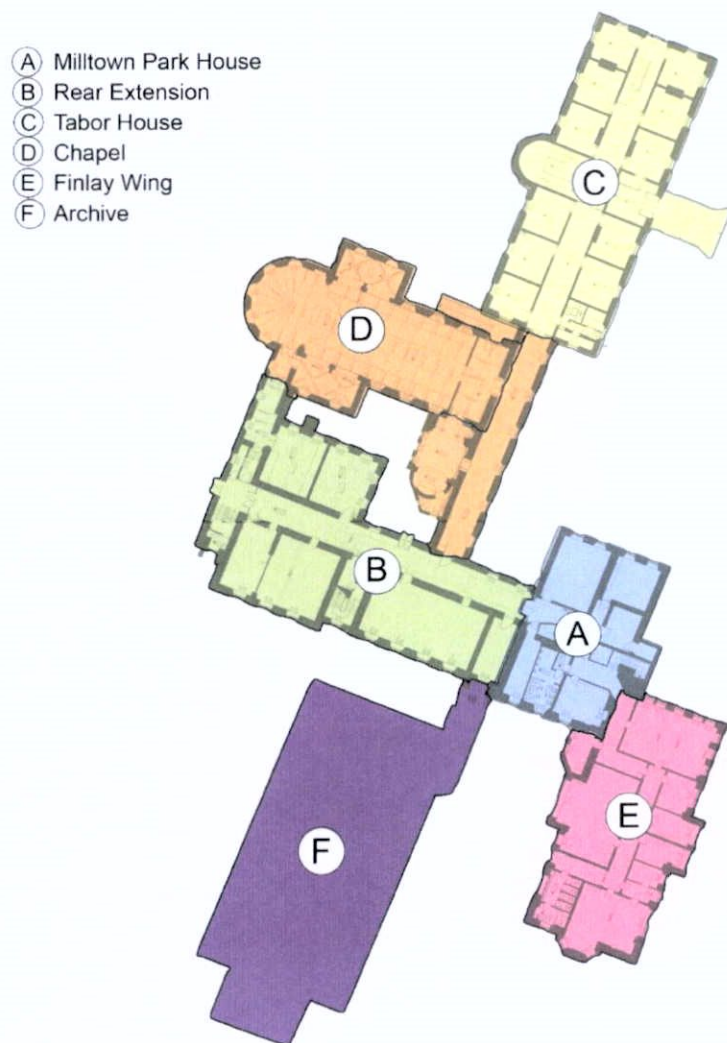


Plate 128: Two-over-two sash windows to the south of MPH.

APPENDIX A7.2.10

BUILDING B

REAR EXTENSION BLOCK – INTERNAL IMAGES



A7.2.10.1. Entrance Level



Plate 129: View towards rear extension block from entrance of main house



Plate 130: Connection with rear extension block, from rear of entrance hall



Plate 131: Wide corridor within rear extension block, with dormitories/meeting rooms on either side



Plate 132: As above, opposing view



Plate 133: View from entrance link, from main house to central corridor of rear extension block



Plate 134: Corridor at same level viewing west to east

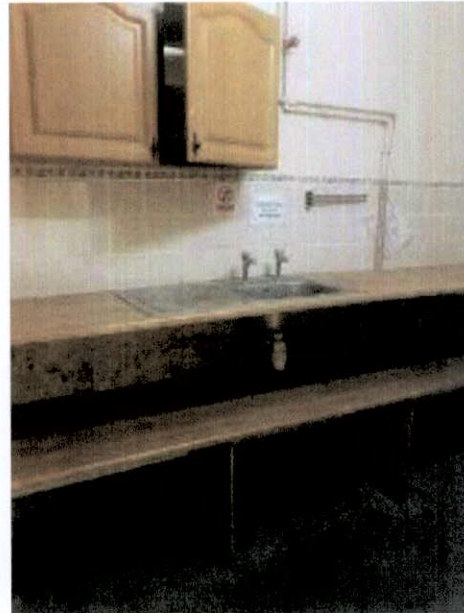


Plate 135: Security door off main block corridor

A7.2.10.2. Basement Level



*Plate 136: Dormitory at lower ground floor level.
Note water ingress*



*Plate 137: Small service area which was
previously used as a photography dark room*



*Plate 138: Narrow office space with partition wall, to
the southwest corner of main house*



*Plate 139: Corridor viewing back to main house,
from west to east*



Plate 140: Same corridor, viewing from east to west



Plate 141: Small room with partitioned wall showing signs of water damage

A7.2.10.3 First Floor Level



Plate 142: Lecture room within rear extension block at 1st floor level



Plate 143: Toilet block within 1st floor level



Plate 144: Later windows with original panelled shutters, exposed grid structure.



Plate 145: Corbelled chimneypiece within first floor of MPH rear extension.



Plate 146: Lecture room within rear extension block at 1st floor level. Panelled door, sash windows with panelled shutters.



Plate 147: Exposed structural grid in rear extension.



Plate 148: Stair linking 1st and entrance level of rear extension block



Plate 149: Stair linking 1st and entrance level of rear extension block



Plate 150: Stair access leading to a suite of rooms adjacent to the former domestic chapel at half level between entrance and 1st floor level of rear extension block



Plate 151: Alternative view of corresponding stair



Plate 152: Stairs to rear of former chapel accessing the chapel ante-room



Plate 153: Former domestic chapel, now a reading room, accessed from a short flight within the entrance level corridor within rear extension block

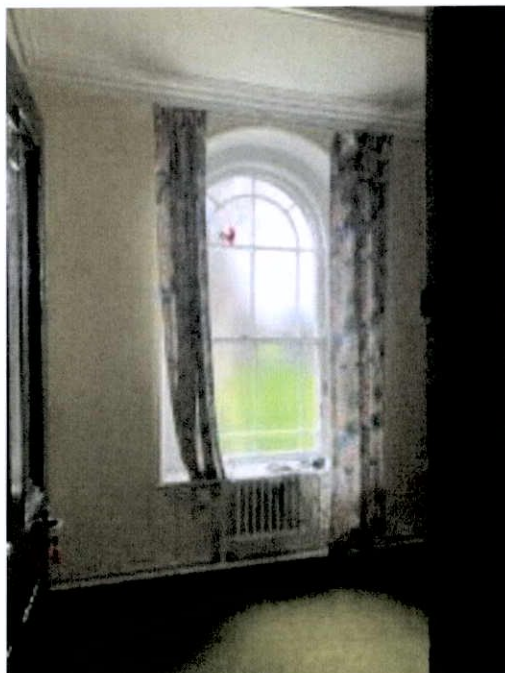


Plate 154: Round headed timber sash window with margin lights.



Plate 155: Coffered ceiling of former domestic Chapel.



Plate 156: Round headed timber sash window with margin lights within former domestic Chapel.

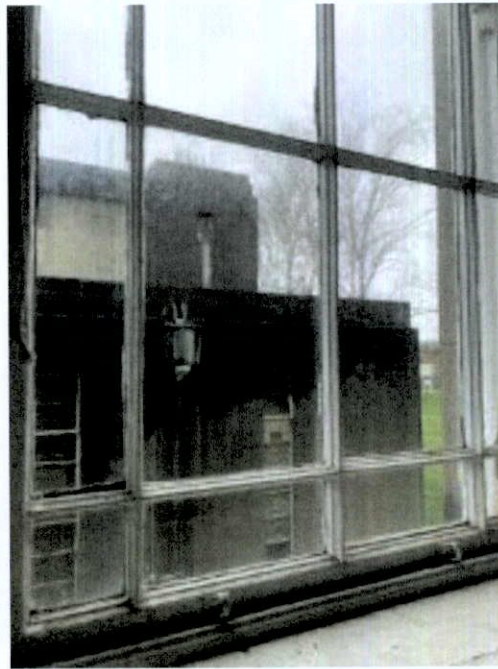


Plate 157: Detail of profile of sash window joinery.



Plate 158: Entry to former domestic Chapel from lower level internal entrance to south.



Plate 159: Round headed opening to lobby affording access to former domestic Chapel.



Plate 160: A typical dormitory with modern door



Plate 161: A typical dormitory with replacement arched window

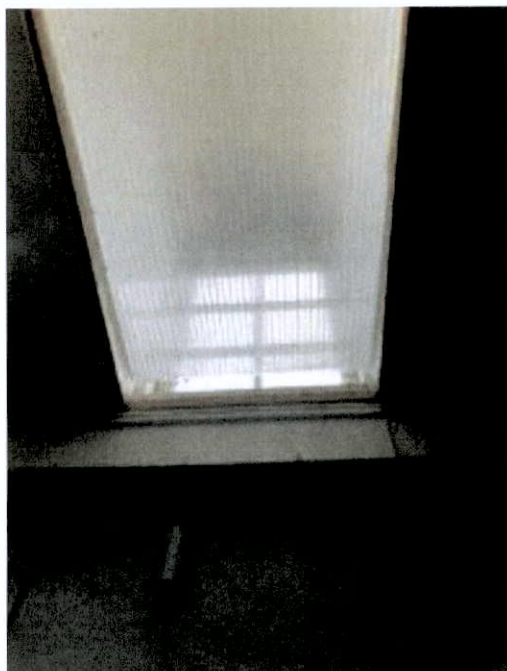


Plate 162: Roof-light at high level at rear of MPH

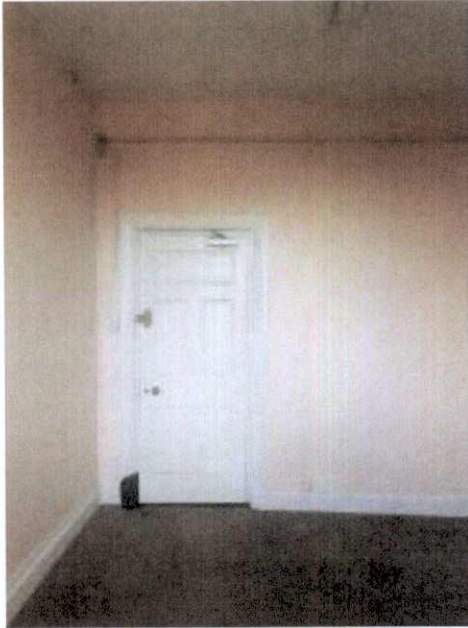


Plate 163: A typical dormitory in main corridor with modern door and architrave. Exposed services.



Plate 164: A typical dormitory. Exposed services.



Plate 165: Larger dormitory room with modern windows, contemporary wall linings.

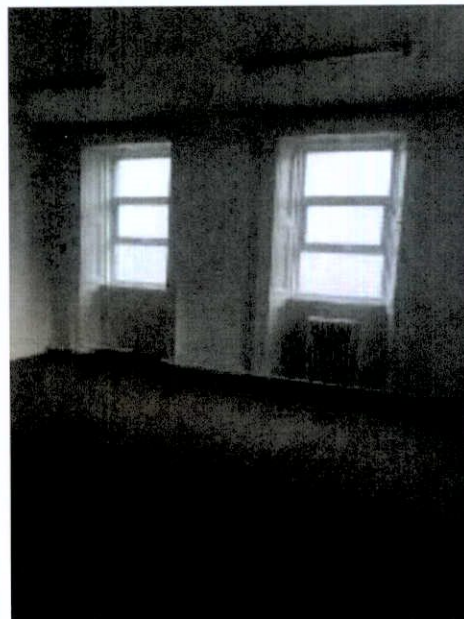


Plate 166: Large dormitory with original panelled window reveals, replacement window frame.



Plate 167: Large lecture room with fireplace at first floor level. Chimneypiece with tiled cheeks.



Plate 168: Same Lecture room, view towards two-over-two sash windows.



Plate 169: Large lecture room with cast-iron fireplace at first floor level

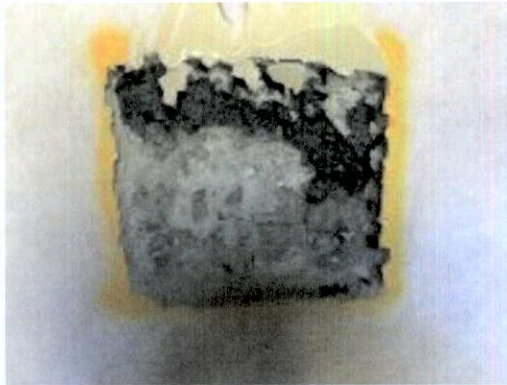


Plate 170: Opening up works reveal mix of technologies in the construction of MPH extension. Mass concrete walls in upper part of rear extension

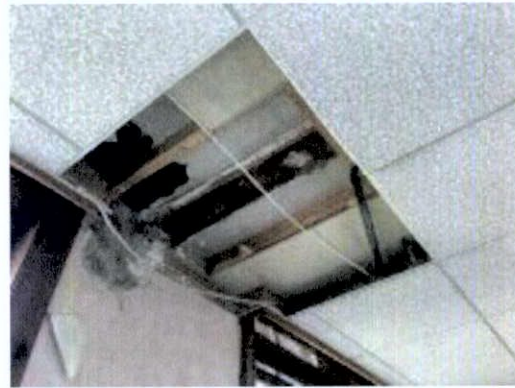


Plate 171: Multiple layers of past interventions Floor composition: floorboards on later timber joists, steel beams and 2 layers of later suspended ceilings.



Plate 172: Level 1 first floor corridor, linking rear extension to rear of MPH. Sash windows, contemporary finishes throughout. Upper level of Former domestic chapel concealed behind wall to RHS.

A7.2.10.4 Stairs at rear of block



Plate 173: Stair at rear of block. Timber, open tread with turned bannisters.

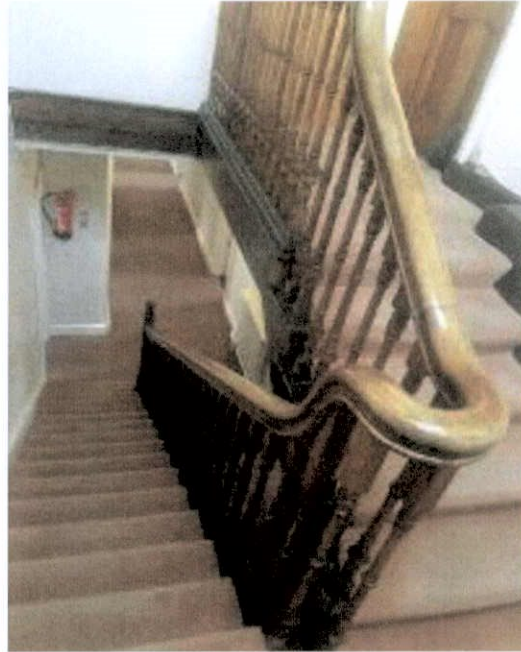


Plate 174: Detail of stair, hardwood handrail with swan-neck detail at landing.



Plate 175: Detail of stair from 2nd to 1st floor



Plate 176: Detail of stair at entrance level

A7.2.10.5 Second Floor Level



Plate 177: 2nd floor level typical study room to front (east) on first floor with signs of water damage

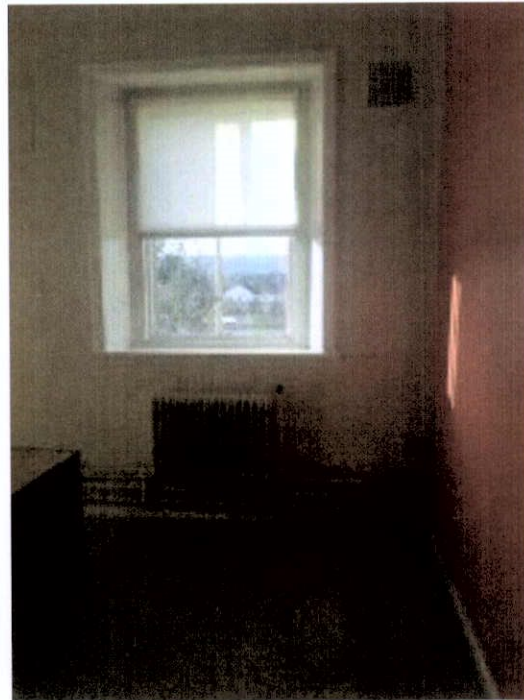


Plate 178: Same level rear room



Plate 179: 2nd floor level office



Plate 180: Larger office space



Plate 181: Rear southwestern room at second floor level



Plate 182: Round-headed window in bedroom to southwest



Plate 183: Central corridor at 2nd floor level

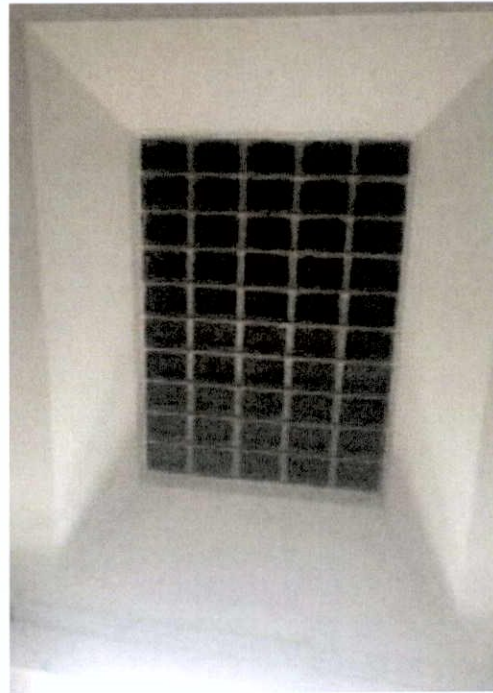


Plate 184: Example of cast iron rooflight at 2nd floor level



Plate 185: Typical small lecture room absent of decorative detailing and having modern window at second floor level



Plate 186: Office / store room at same level



Plate 187: Painted stair to rear of block



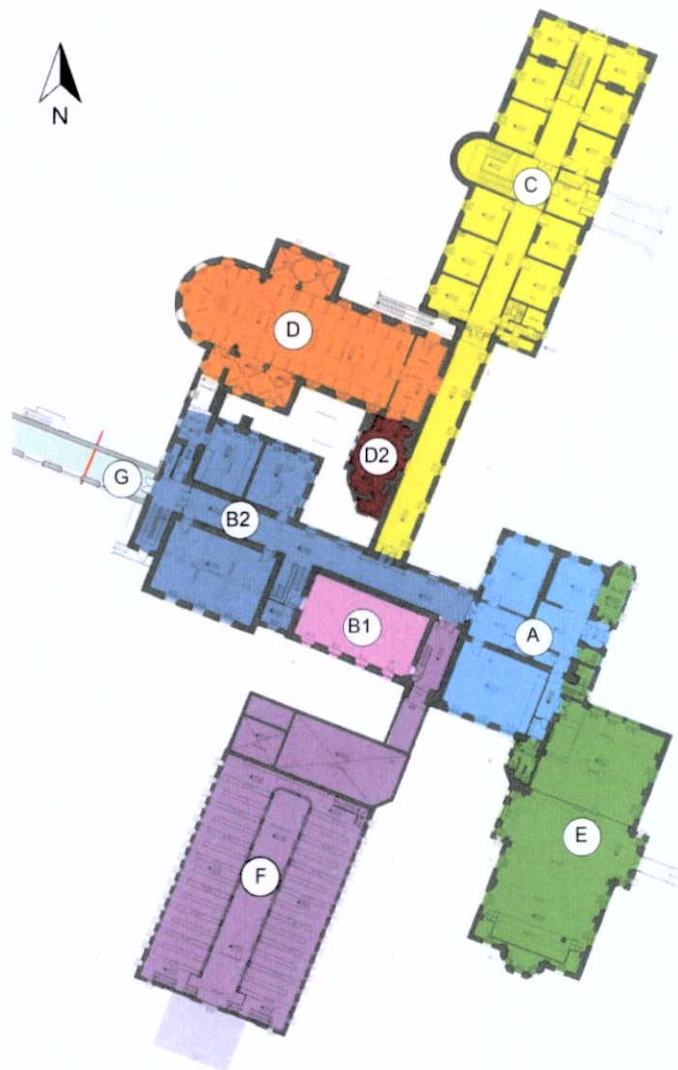
Plate 188: Second floor landing

APPENDIX A7.2.11

BUILDING C

TABOR HOUSE – INTERNAL IMAGES

- A Milltown Park House
- B Rear Extension
- C Tabor House
- D Chapel
- E Finlay Wing
- F Archive
- G Link



A7.2.11.1. Entrance Level



Plate 189: Later vestibule inside main entrance door.

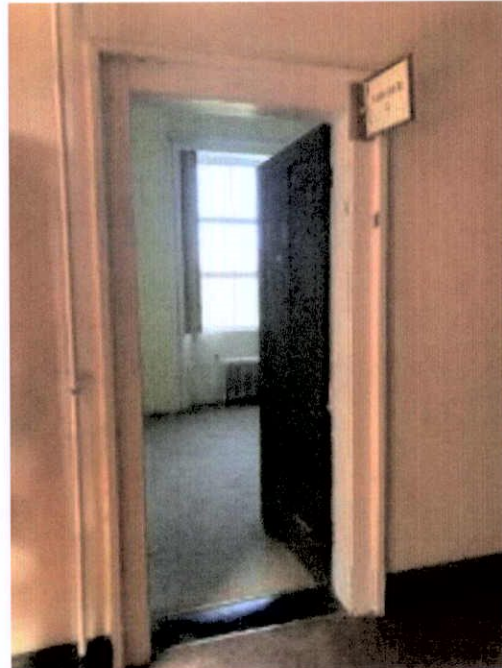


Plate 190: Typical four paneled door and molded architrave within Tabor House



Plate 191: Corbel chimneypiece and cast iron insert

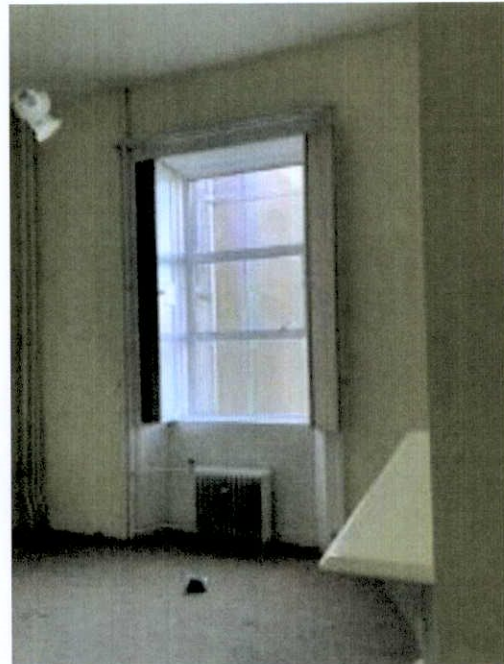


Plate 192: Typical ground floor window with paneled shutters.

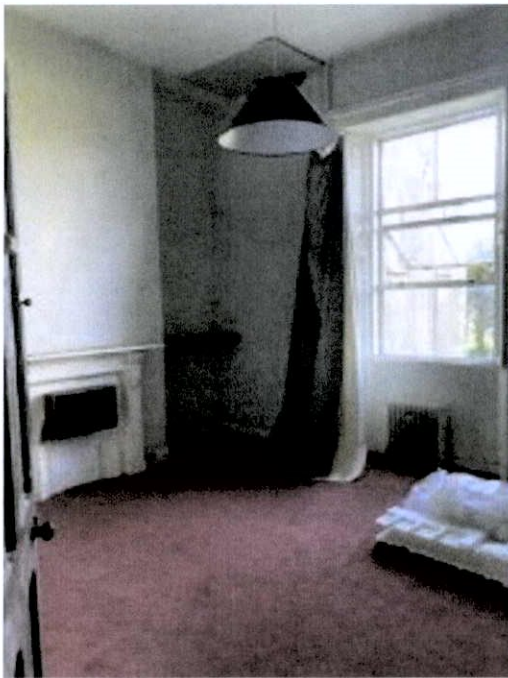


Plate 193: Typical entrance level accommodation with corbelled chimneypiece and original door and window boxes. Replacement window frames to northern elevation.



Plate 194: Corbel chimneypiece and cast iron insert. Paneled door, molded architrave and picture rail.



Plate 195: Evidence of water damage to ceiling fabric.



Plate 196: Stepped cornice and picture rail in ground floor accommodation. Timber chimneypiece with glazed tile insert.



Plate 197: Stepped cornice and picture rail in ground floor accommodation.



Plate 198: Two-over-two sash window, original shutters and architrave. Areas of plaster removed to reveal underlying masonry substrate.



Plate 199: Section of plaster removed to reveal brick substrate.



Plate 200: Corbel chimneypiece and cast iron insert. No cornice.

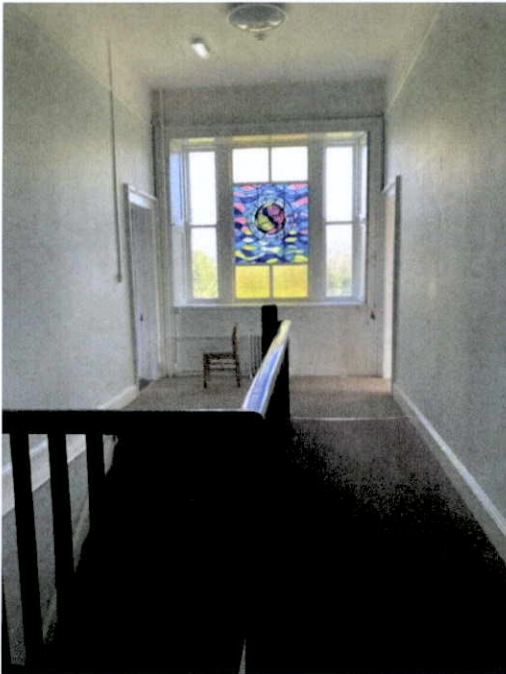


Plate 201: Stairs to entrance level from northeast of basement with stained glass tripartite window at end of corridor.



Plate 202: 20th Century stained glass window to north east end of entrance level corridor



Plate 203: Stairs to entrance level from northeast of basement.



Plate 204: Lecture room/office at entrance level



Plate 205: Entrance level corridor with later cross-corridor fire screens. Water ingress damage to ceiling fabric.



Plate 206: Entrance level corridor with later cross-corridor fire screens.



Plate 207: Cross-corridor fire screens, original molded architraves to paneled doors either side of corridor.

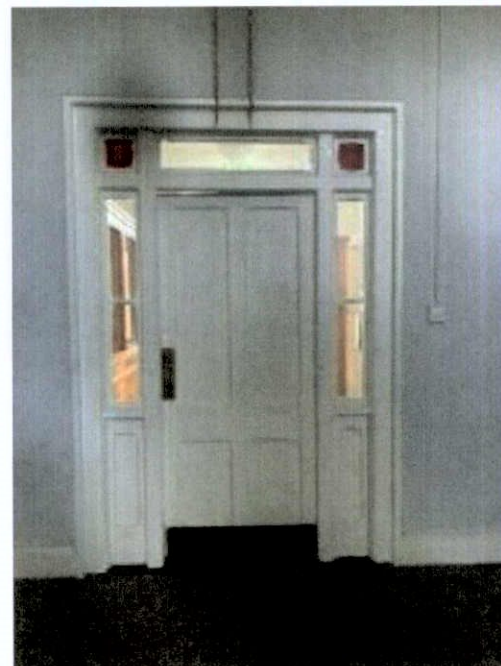


Plate 208: Paneled door with margin lights and colored glass detail.

A7.2.11.2. Lower Ground Floor Level



Plate 209: Open tread, timber stair in north-east bay. Turned newel post and timber handrail.

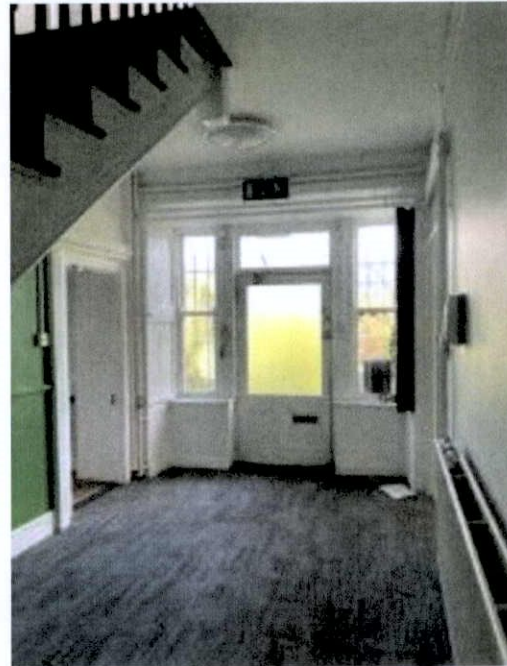


Plate 210: Side door and sash windows in north-east gable.



Plate 211: View from interior of side door, down corridor to main house. Panel detail to side of stair.



Plate 212: Interior view of side door to north east with glass panelling



Plate 213:: Under stair cupboard in hall at side entrance. Panel detail matching the entrance door.



Plate 214: Overgrown vegetation within lower ground floor impacting original joinery fabric. Corbelled chimneypiece matching those on the entrance level.



Plate 215: Original door and window joinery. Localised removal of internal render to inspect underlying masonry fabric.



Plate 216: Overgrown vegetation impacting original joinery fabric.

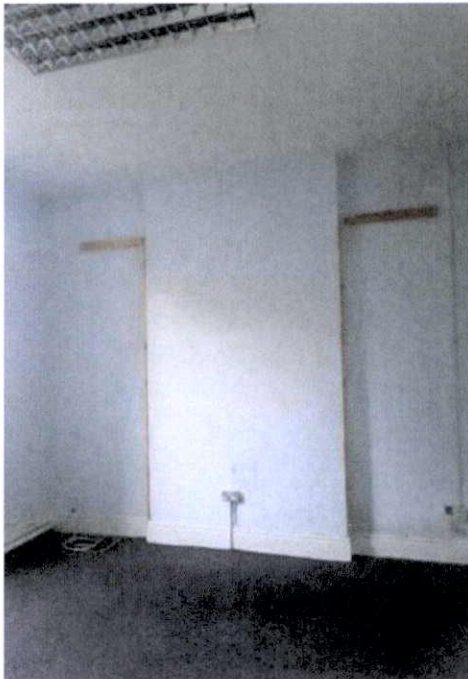


Plate 217: Lecture room, with chimneypiece removed. Contemporary services surface mounted throughout.

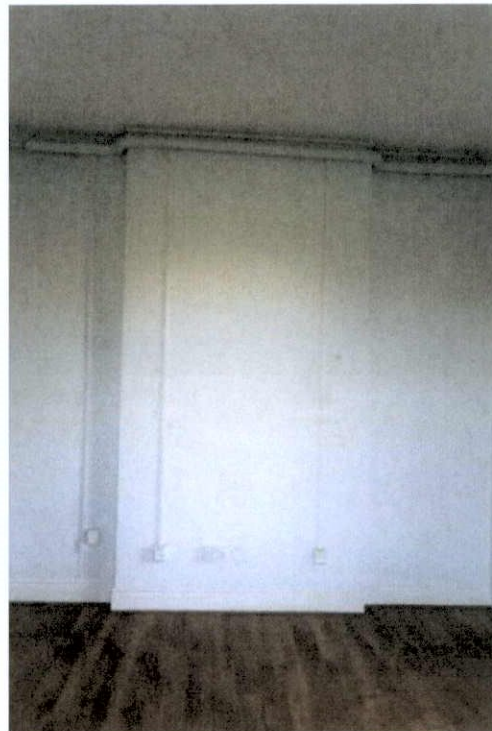


Plate 218: Chimneypiece removed. Contemporary services surface mounted throughout.

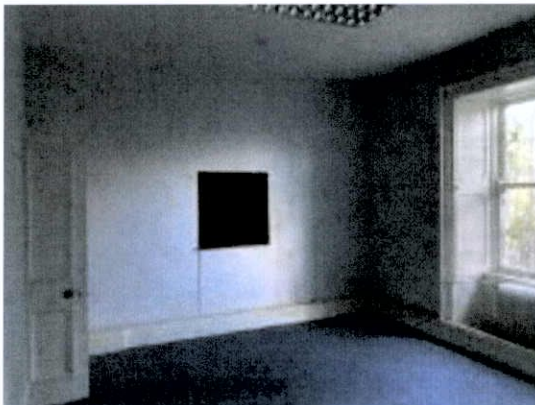


Plate 219: Redundant dumb waiter.

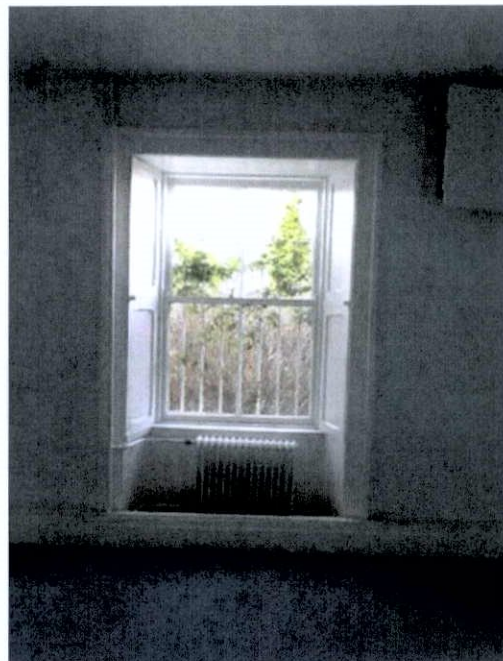


Plate 220: Lower ground floor two-over-two timber sash window with panelled shutters.



Plate 221: Kitchen/dining area created by merging of former retreat rooms. Contemporary ceramic tiled floor finish. Exposed services throughout.



Plate 222: Kitchen/dining area created by merging of former retreat rooms

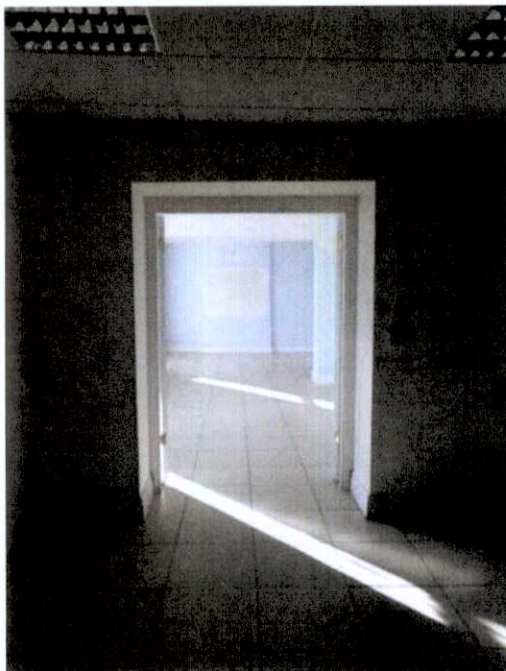


Plate 223: Wider view of dining room. Suspended ceilings and contemporary finishes.

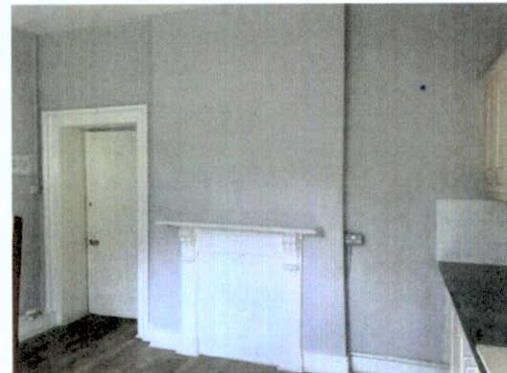


Plate 224: Kitchenette on lower ground floor. Original chimneypiece, paneled door, moulded architraves and skirting. Later fixtures and fittings.

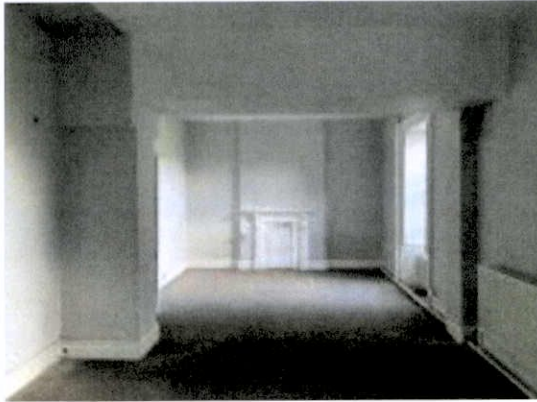


Plate 225: Amalgamated rooms to west. Original chimneypiece and window boxes.



Plate 226: Amalgamated room facing, opposing view.

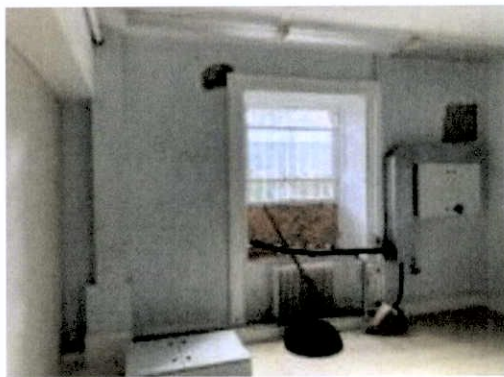


Plate 227: Ad-hoc nature of services threaded through original fabric and temporary weathering.



Plate 228: Localised removal of plasterwork to reveal underlying masonry fabric.



Plate 229: Services area at lower ground floor level with original walls exposed and painted. Original panelled door.



Plate 230: Dumb waiter from kitchen to dining area



Plate 231: Plant room at basement level. Exposed brick, painted finish.



Plate 232: Basement corridor with original window joinery.



Plate 233: Vaulted area under main entrance steps

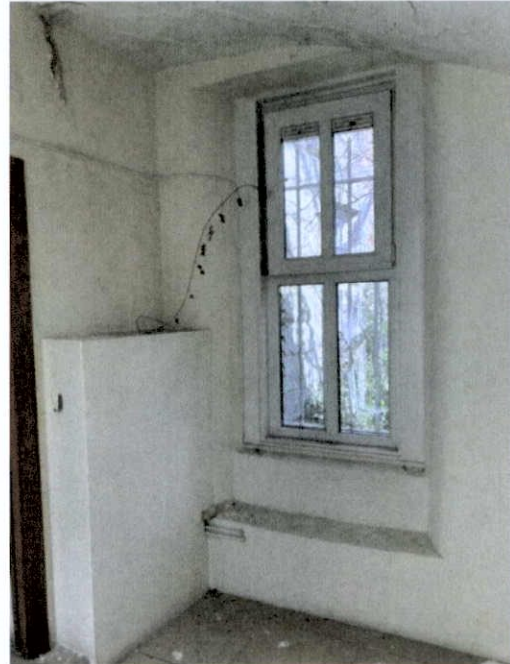


Plate 234: Contemporary uPVC window on lower ground floor. Beneath main entrance.



Plate 235: Basement corridor

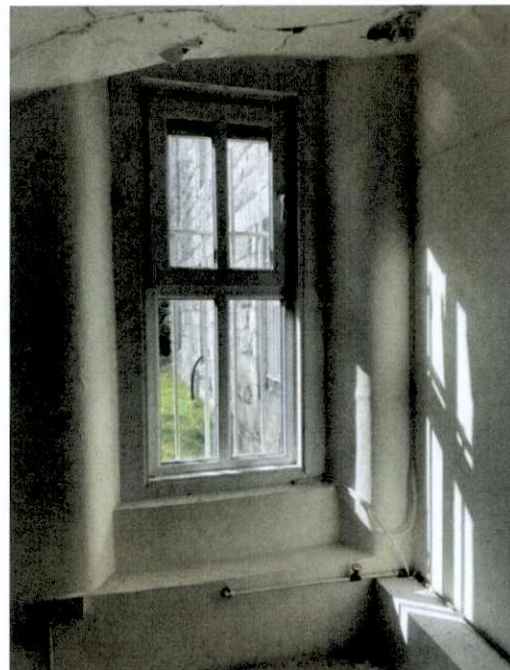


Plate 236: Contemporary uPVC window on lower ground floor. Beneath main entrance. Note deterioration of ceiling fabric indicative of water ingress through exterior steps.



Plate 237: Lower ground floor entry to rear (north) elevation within rounded bay. Later suspended ceiling.



Plate 238: Later timber-framed fire screens within corridor.



Plate 239: Later lobbies and cross-corridor fire rated screens and suspended ceilings.

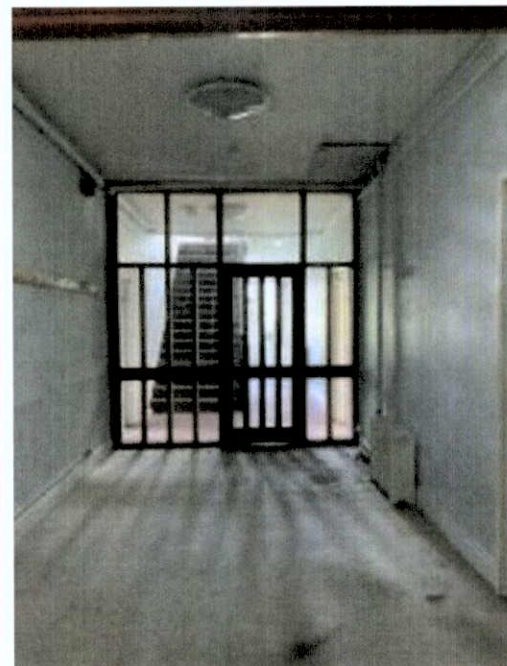


Plate 240: Lower ground floor, fire-rated screen in front of timber stairs in north-eastern bay.

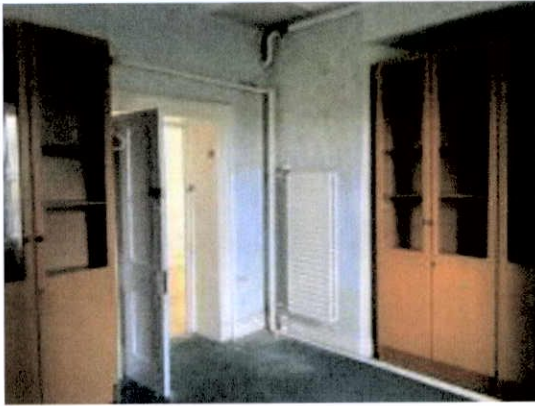


Plate 241: Contemporary fixtures and fittings and services. Original door joinery.



Plate 242: Original chimneypiece with scrolled corbels supporting mantel



Plate 243: Contemporary fixtures and fittings and services. Original window joinery.

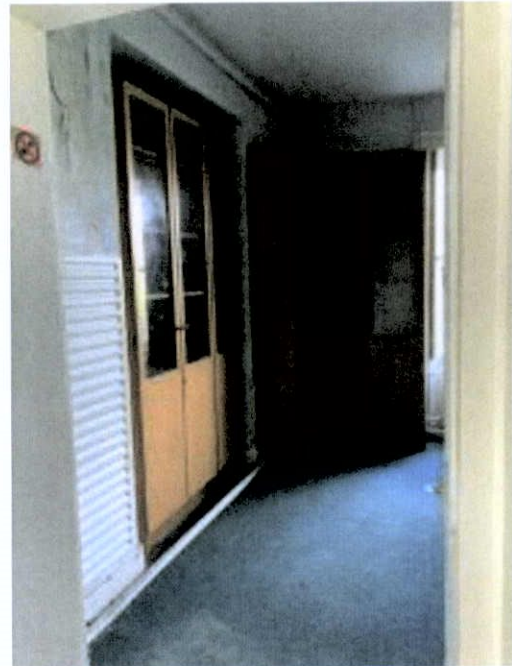


Plate 244: Contemporary fixtures and fittings and services. Exposed services.

A7.2.11.3. First Floor Level

Plate 245: Central corridor with later fire-rated screens across corridors and enclosing stairs.

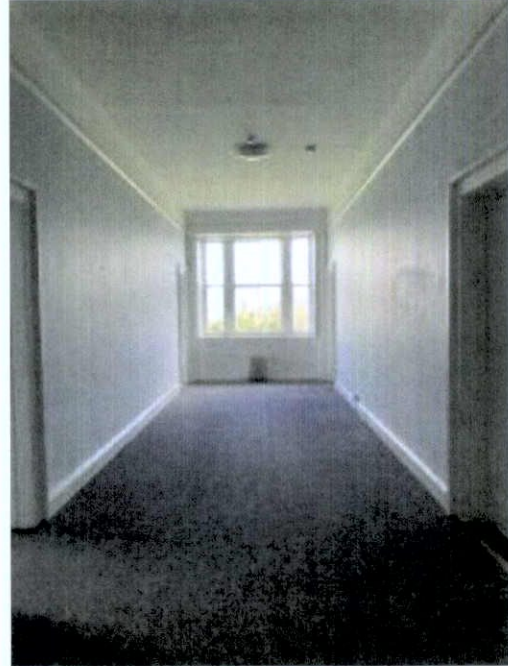


Plate 246: View of south west window towards tripartite window, Original joinery, picture rail, no cornice.

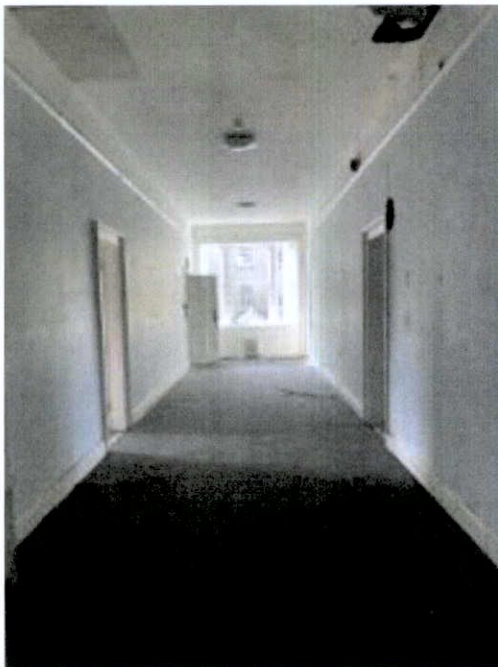


Plate 247: View down central spine corridor facing west towards tripartite window.



Plate 248: Typical first floor accommodation, original window-box with contemporary uPVC window. Exposed services, no decorative plasterwork.



Plate 249: Dormitory facing south east, original window-box with contemporary uPVC window.



Plate 250: Dormitory with laminate flooring. Original window-box and two-over-two timber sash.



Plate 251: Dormitory with original window-box and two-over-two timber sash.



Plate 252: Four paneled door with molded architrave. No decorative plasterwork.



Plate 253: Chimneybreast with chimney piece removed. Evidence of water damage to ceilings and walls.



Plate 254: Original window boxes with contemporary uPVC window frame.



Plate 255: Timber window with opening casement sections,



Plate 256: Contemporary fixtures and fittings and suspended ceilings.

A7.2.11.4. Secondary stair to south-west bay of Tabor House



Plate 257: Secondary staircase in western bay with shaped flat metal handrail and square profile uprights. Vertical timber boarding to side of stair.



Plate 258: Arrangement of original paneled doors and transom lights within secondary stair enclosure.



Plate 259: Detail of metal balustrade.



Plate 260: View down winding staircase

A7.2.11.5. Second Floor Level



Plate 261: Large seminar room which runs the width of the NE gable, 2nd floor and has views north, east and west. Original window joinery.



Plate 262: Seminar room with contemporary fixtures and services.



Plate 263: Detail of tripartite sash window.

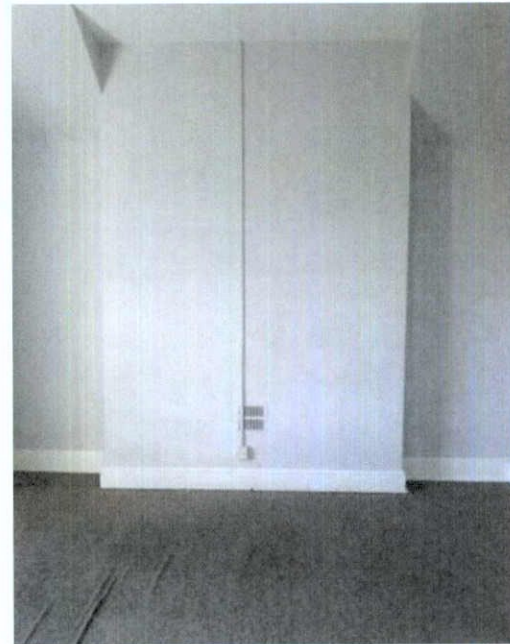


Plate 264: Example of removed chimney piece to typical bedroom.

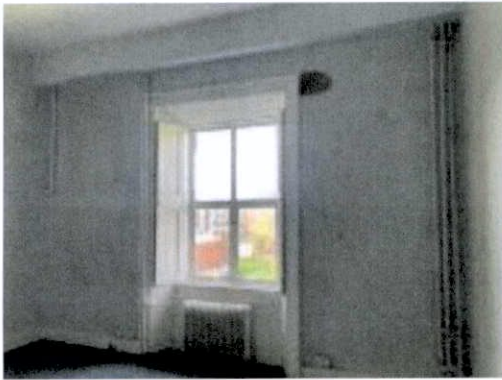


Plate 265: Second floor bedroom. Contemporary uPVC window frame with original timber window boxes.

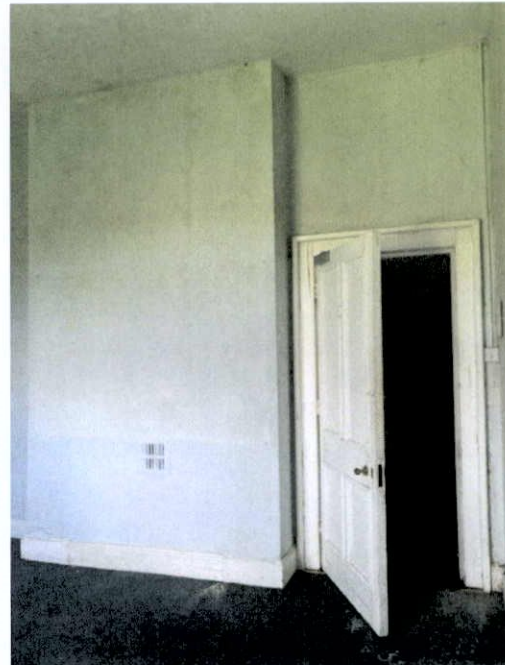


Plate 266: No chimney piece. Original joinery. Staining of ceiling suggestive of water ingress.

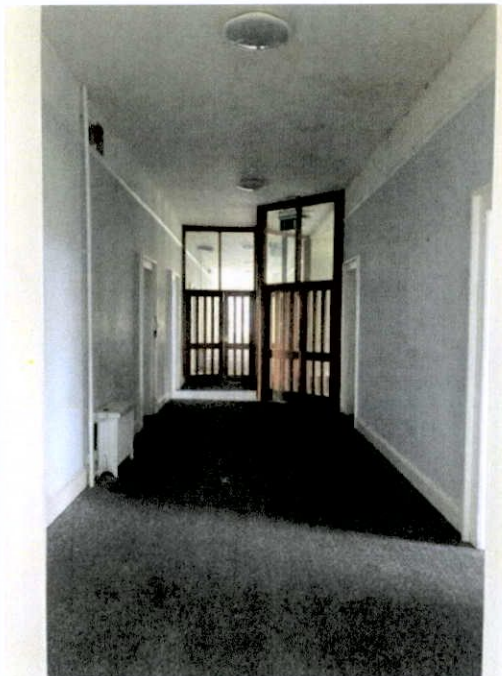


Plate 267: Second floor corridor with later screen doors to central stair and across corridor. Bedroom doors are panelled with moulded architraves.



Plate 268: Water ingress damage from roof impacting second floor corridor ceiling



Plate 269: Central spine corridor with water staining evident to ceiling.

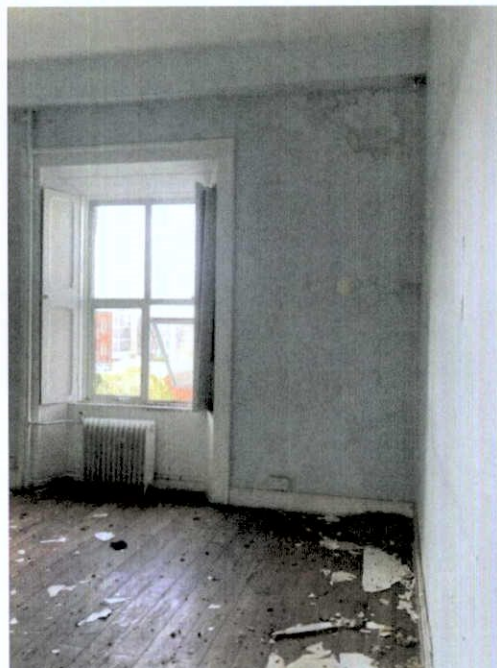


Plate 270: Damage to ceiling and wall fabric due to water ingress.

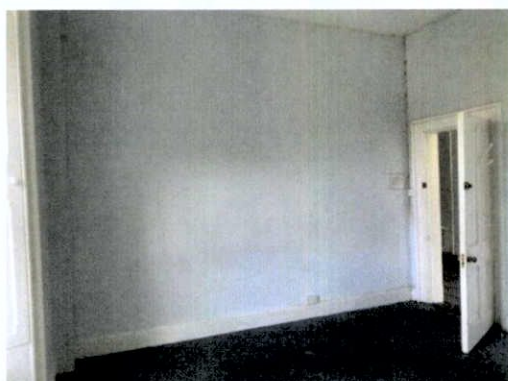


Plate 271: Typical upper floor accommodation. Original four paneled door and architrave.

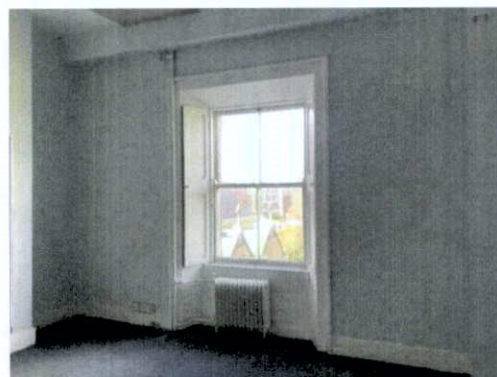


Plate 272: Original window box with contemporary uPVC window frame.

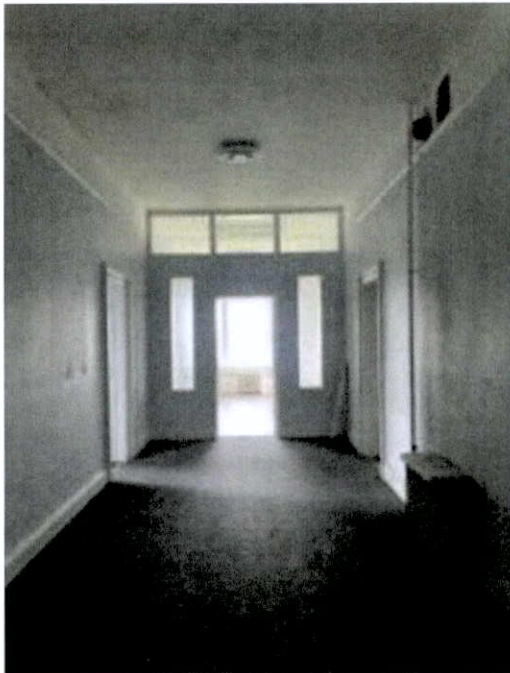


Plate 273: Fire rated partition door with glass panels within central corridor

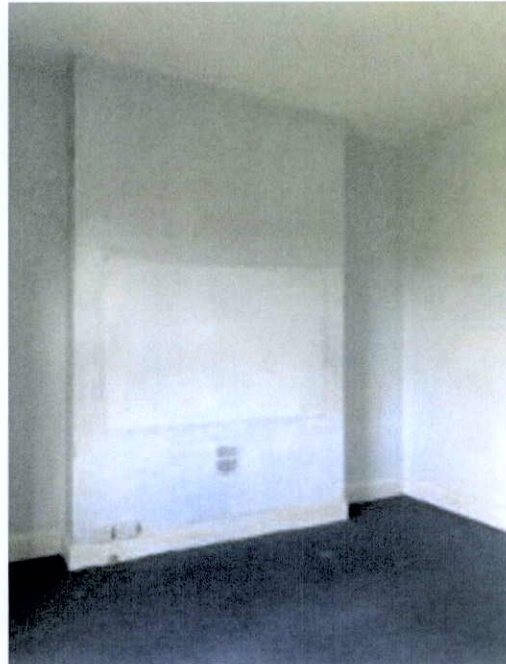


Plate 274: Example of former bedroom with chimneypiece removed.



Plate 275: Central spine corridor. Original timber floor under carpet finish. Staining to ceiling evident.

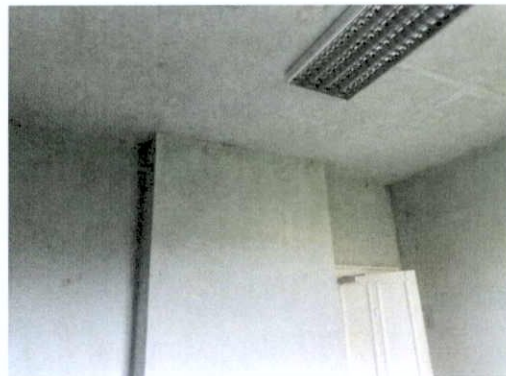


Plate 276: Mould growth evident on wall and ceiling surfaces.



Plate 277: Original window joinery.



Plate 278: Original window joinery, with contemporary uPVC window frame in north elevation.



Plate 279: Corridor to former bathrooms.



Plate 280: Simple white tile laid in stacked bond on wall of former bathroom.

A7.2.11.5. Central Stair



Plate 281: Main stairs with open well within rounded bay to rear (north) of Tabor House

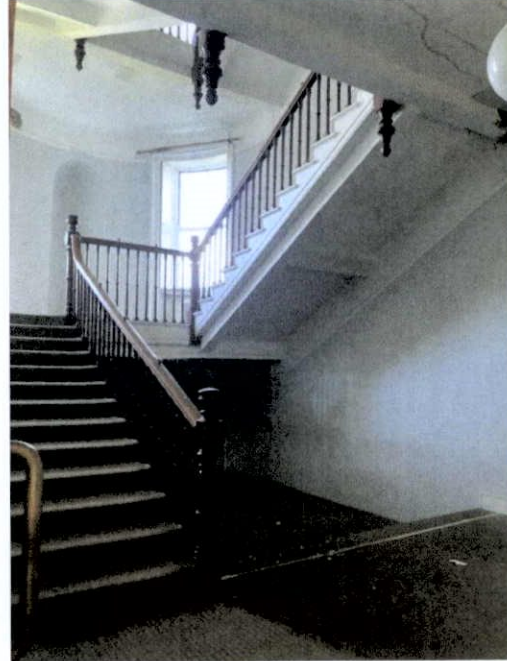


Plate 282: Turned timber balusters with heavy newel post matching the stair in the northern bay.



Plate 283: Paneled door with margin lights and coloured glass detail.



Plate 284: View of main stairs through central well.

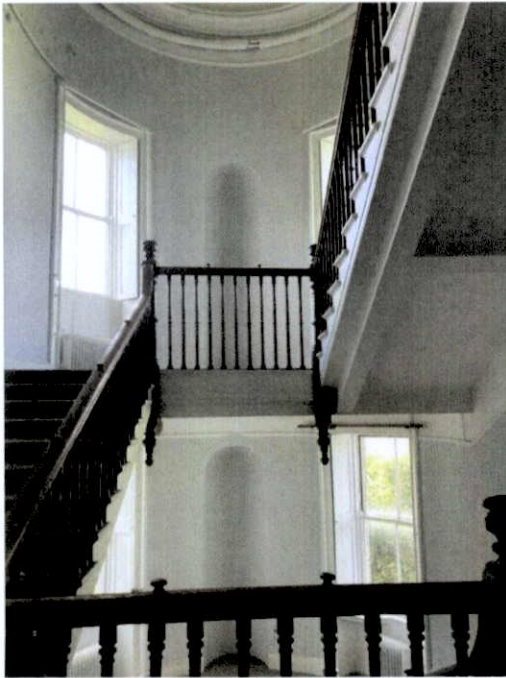


Plate 285: Return at top of central stairs, with arch headed niches in half-landing



Plate 286: View down central stair



Plate 287: View from second floor landing to third floor with later glass door screen to corridor



Plate 288: View up stair

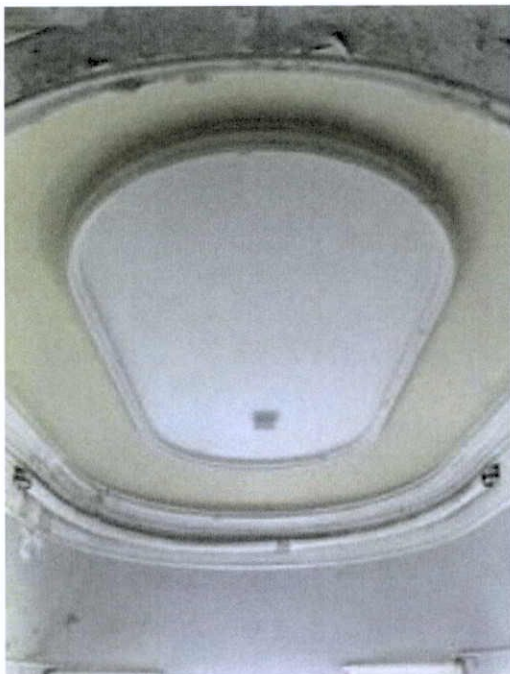


Plate 191: Coffered ceiling and moulded cornice within main stairwell.

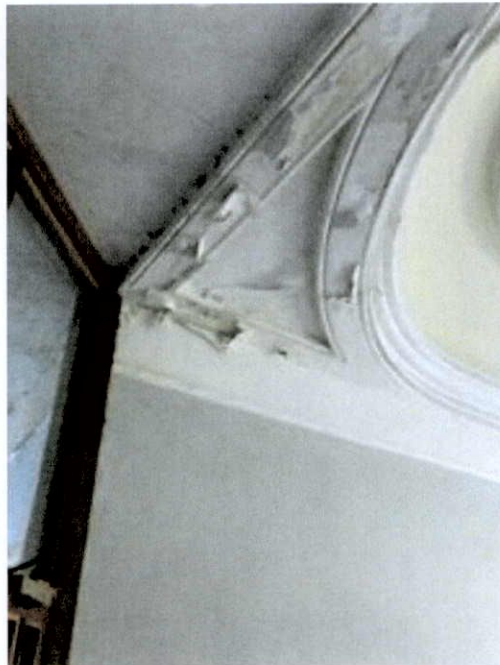


Plate 192: Flaking paint and staining of ceiling due to water ingress.



Plate 289: Detail of oak handrail

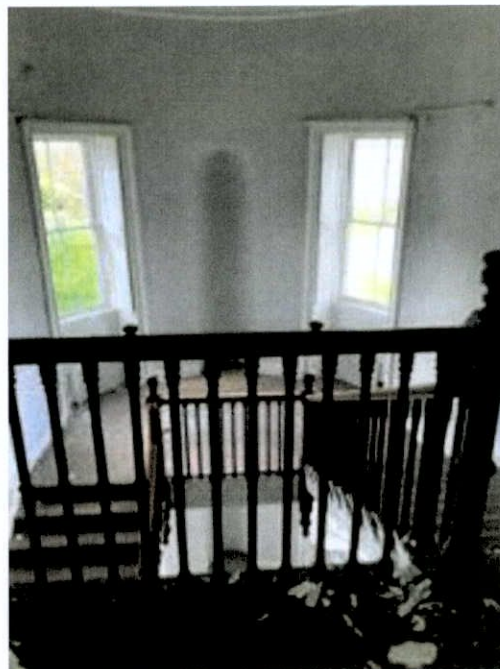


Plate 290: Level 2 landing facing north.

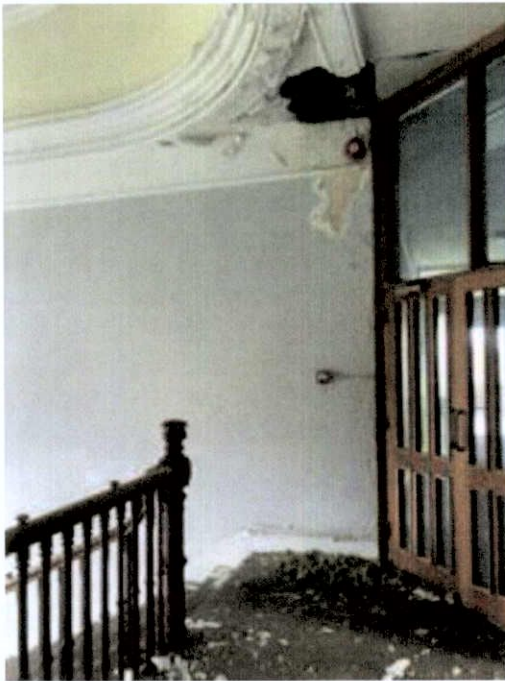


Plate 191: Damage to ceiling above main stairwell.

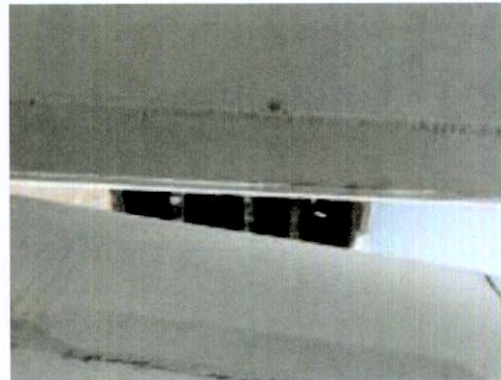


Plate 192: Breach in second floor ceiling with roof space exposed.



Plate 291: Rounded niche on half-landing flanked by a pair of two-over-two sash windows.

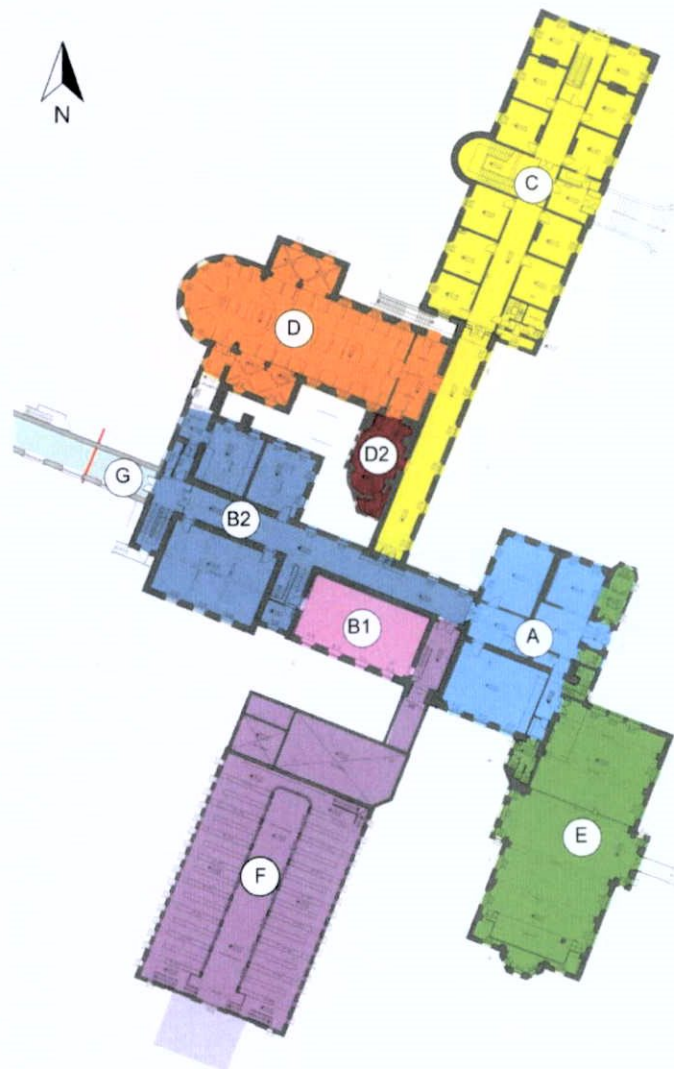


Plate 292: Central spine corridor with water damage evident on ceiling and top of walls.

APPENDIX A7.2.12

BUILDING D
CHAPEL – INTERNAL IMAGES

- A Milltown Park House
- B Rear Extension
- C Tabor House
- D Chapel
- E Finlay Wing
- F Archive
- G Link



PLAN NO: LRD6026/2383
RECEIVED: 13/06/2023

A7.2.12.1. Entrance Level



Plate 293: Carved mahogany entrance doors and pillars to chapel which is accessed from Milltown Park House

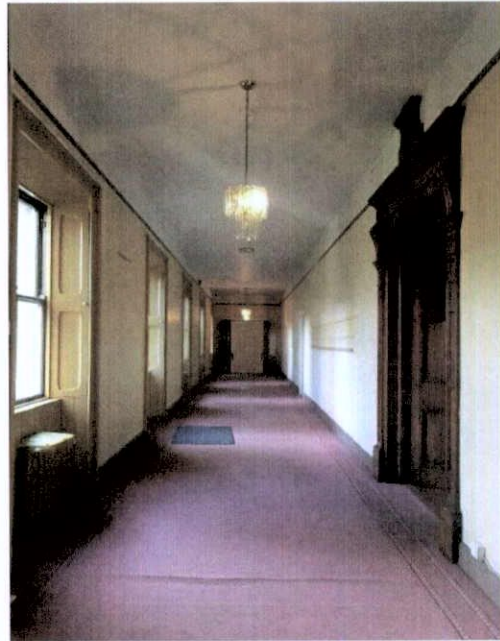


Plate 294: Approach to chapel entrance from the entrance level corridor

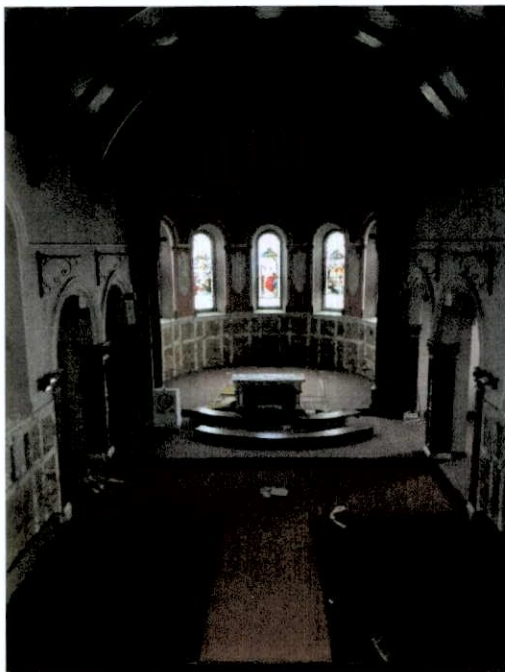


Plate 295: View of the nave and the carved marble altar from the gallery. The painted 'Angel' canvases behind altar by Harry Clarke (1927) were removed by the National Gallery of Ireland in 2021.



Plate 296: Scarred profile of position of Harry Clarke paintings

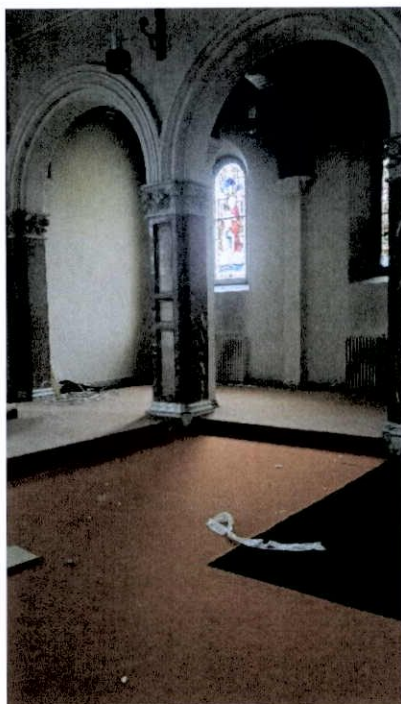


Plate 297: Side chapel



Plate 298: Internal view of side chapel

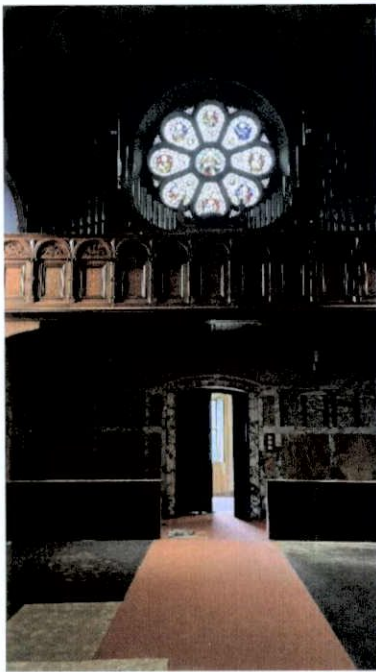


Plate 299: View of the gallery from the nave. The organ was given to Fr. Finlay by Chief Baron

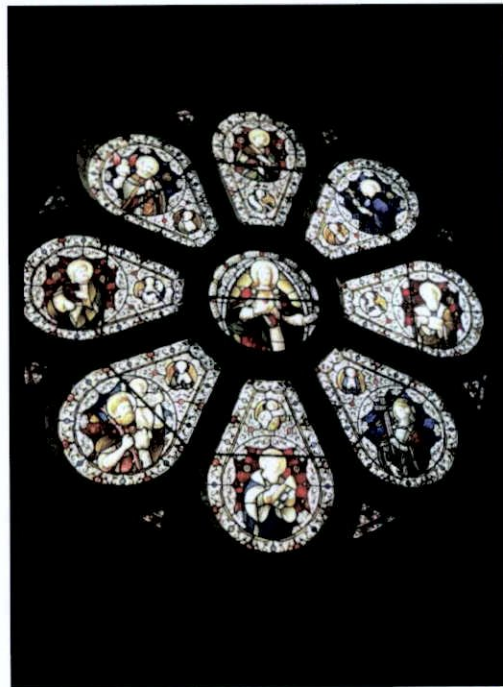


Plate 300: Rose window given to Fr. Finlay by Chief Baron



Plate 301: South wall of nave. Note the absence of the Stations of the Cross which were removed

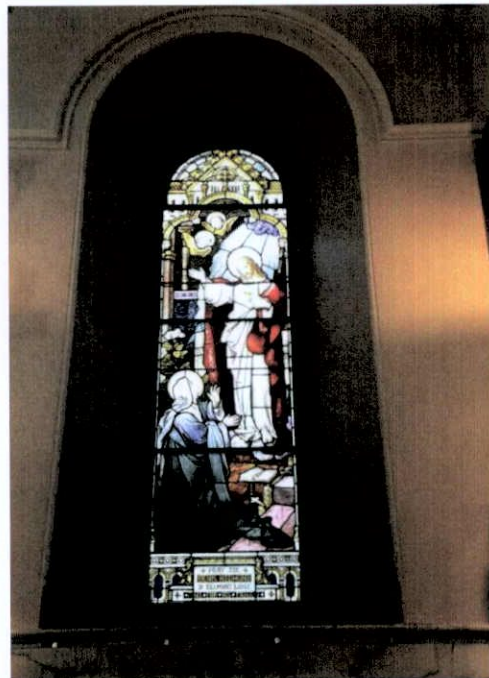


Plate 302: Detail of stained glass window

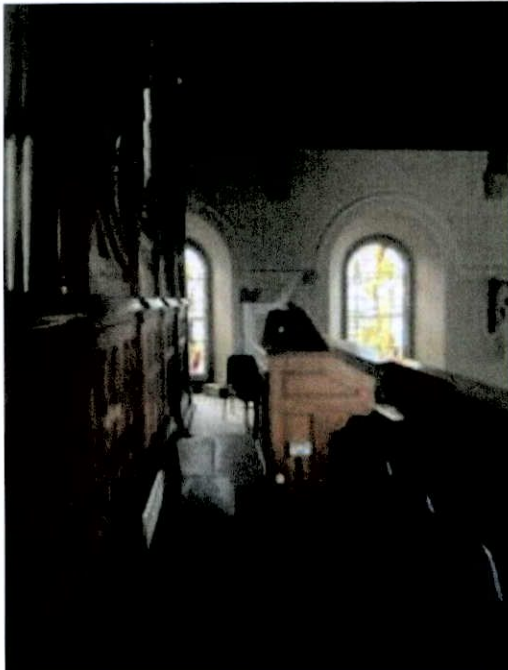


Plate 303: Gallery, facing west, with organ to rear.

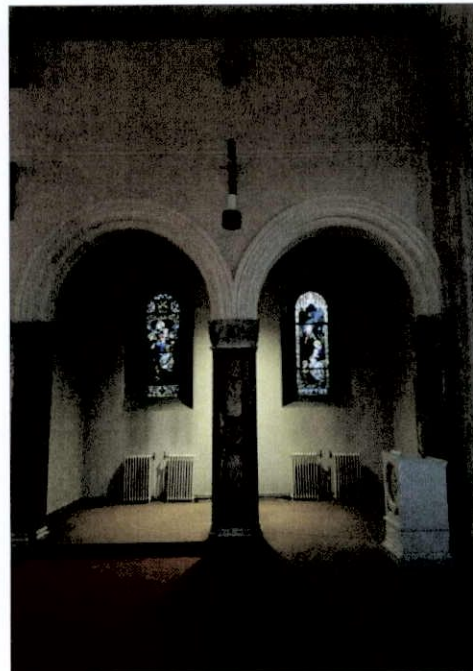


Plate 304: Side chapels with stained glass windows.

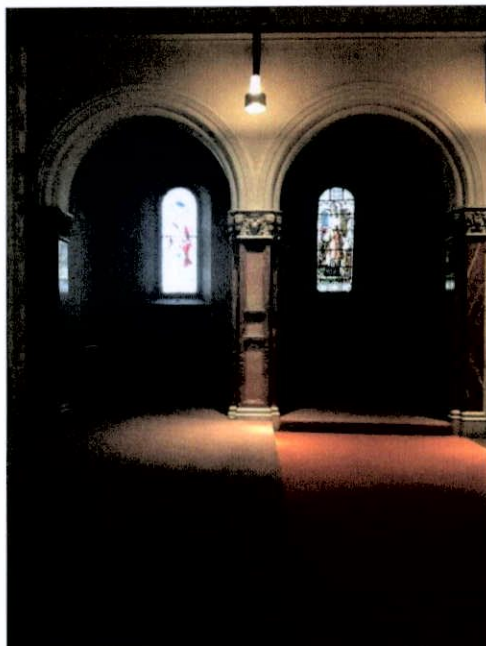


Plate 305: Opposing view, side chapels.

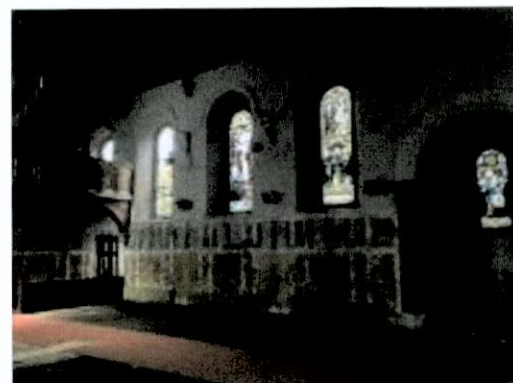


Plate 306: View of nave, facing west.

A7.2.12.2. Western corridor linking Building D to B2

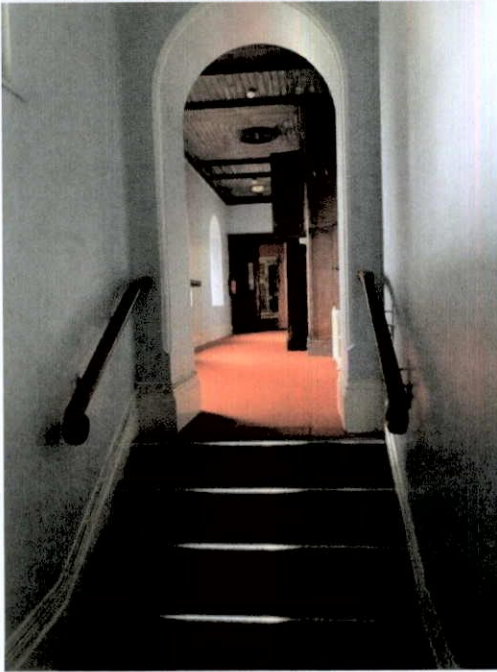


Plate 307: View along corridor on western side of complex between Building D (Chapel) and B2 towards chapel. Arch headed opening at connection to Building B2



Plate 308: Corridor leading to sanctuary



Plate 309: Detail of timber panelled ceiling.

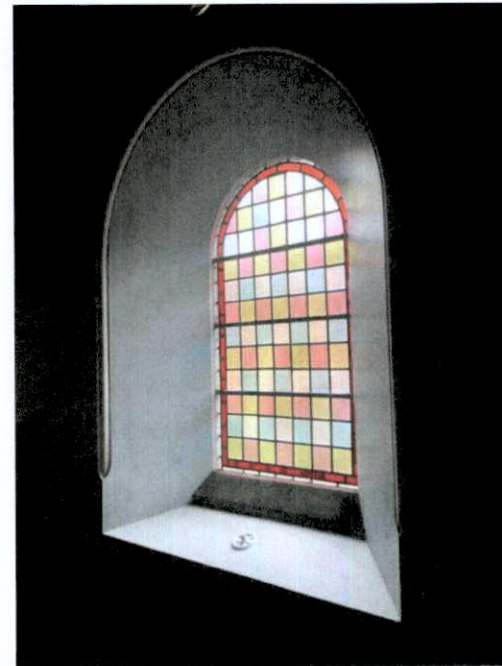


Plate 310: Round-headed window with stained glass. Curved plaster detail on reveal.

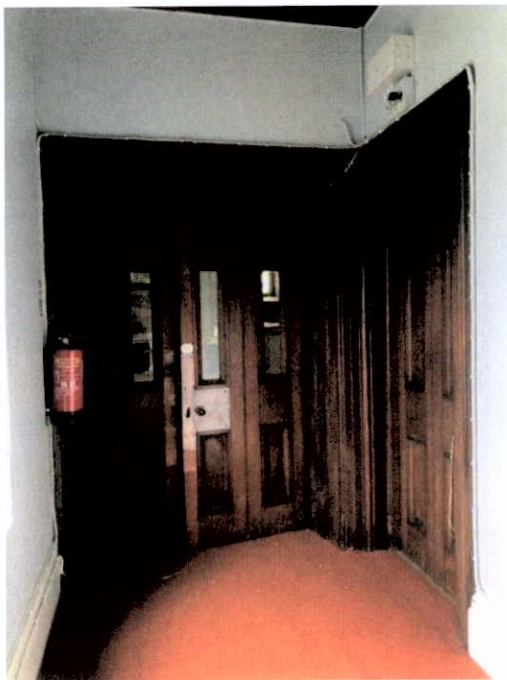


Plate 311: Doorcase from Chapel (left) to sacristy (right) within Building B2



Plate 312: Panelled joinery within corridor linking Chapel to Building B2

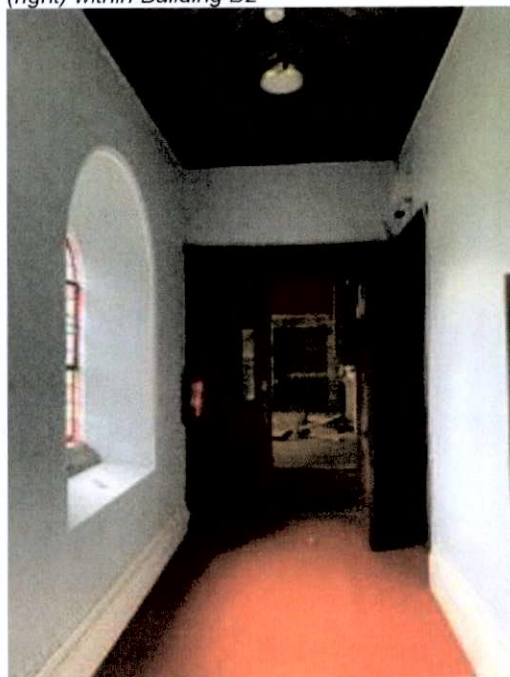


Plate 313: Panelled doors to Chapel, ceiling lined with diagonal timber sheeting.

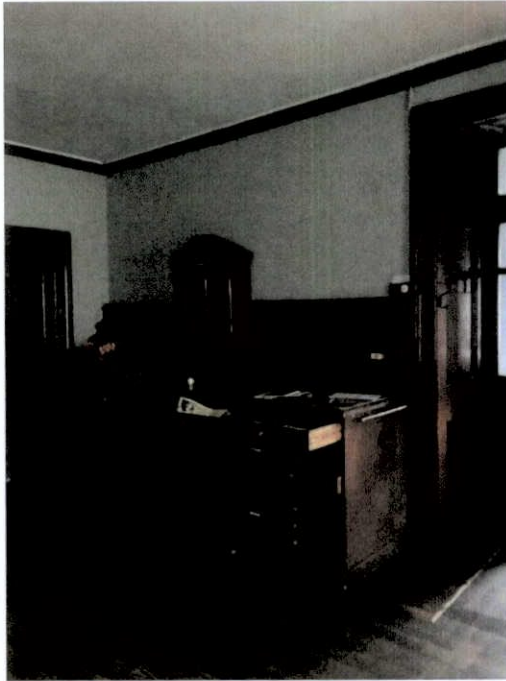


Plate 314: Original joinery and fitted furniture within sacristy.

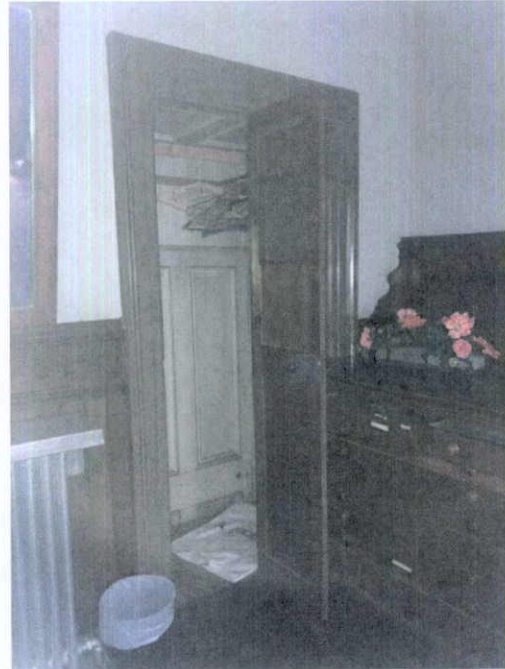


Plate 315: Storage press within sacristy conceals former door opening within Building B2 which was constructed in advance of Chapel.



Plate 316: Six-over-six timber sash within sacristy.



Plate 317: Original joinery and fitted furniture within sacristy.

A7.2.12.3. Building D2 - Sacred Heart Chapel



Plate 318: Interior of the Sacred Heart Chapel, built 1911, which is accessed from within the larger domestic Chapel



Plate 319: Interior wall

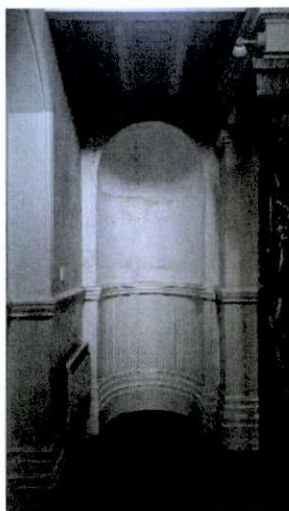


Plate 320: Apsed recess for statue, now removed

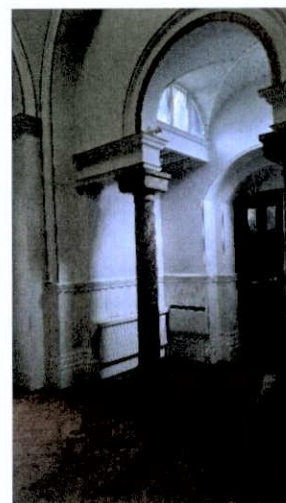


Plate 321: Clerestory light above boarded groin vault



Plate 299: 5 stained glass windows which appear not to be signed or dated. Archive receipts from 1917 state windows, altar and decorations were by Early & Co, Camden Street, Dublin

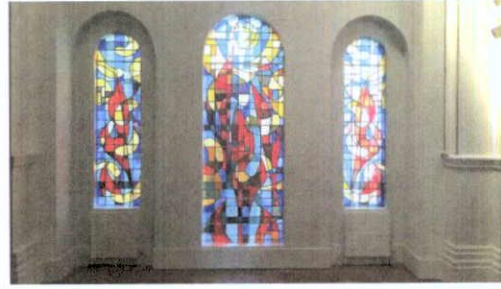


Plate 300: Modern, abstract, stained glass, c1980s appear to have replaced original stained glass

A7.2.12.4. Lower ground floor level



Plate 301: Corridor at lower ground floor level leading to dormitories and study rooms



Plate 302: Evidence of water ingress at base of wall.



Plate 303: Lowered ceiling. Arched openings supporting columns in Chapel above. Contemporary windows. No decorative plasterwork.

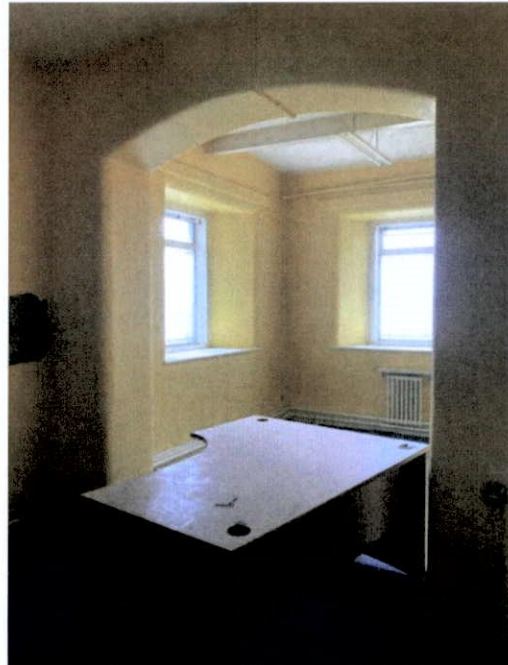


Plate 304: Arched openings supporting columns in Chapel above. Contemporary windows.



Plate 305: Lower ground floor corridor with exposed services. Original sash windows and shutters.



Plate 306: Lower ground floor corridor with later lightweight partition enclosures.



Plate 307: Lower ground floor corridor with two-over-two timber sash window, splayed plaster reveal.



Plate 308: Detail of lower ground floor sash window and panelled shutters. Overgrown vegetation resulting in deterioration of fabric.



Plate 309: Typical panelled door and architrave at basement level.



Plate 310: Plant room area, with exposed brick, painted finish.



Plate 311: Panelled door with transom light over.



Plate 312: Lower ground floor, within rounded bay. Evidence of water ingress at base of walls.

A7.2.12.5. Link with Chapel at first floor level of Tabor House

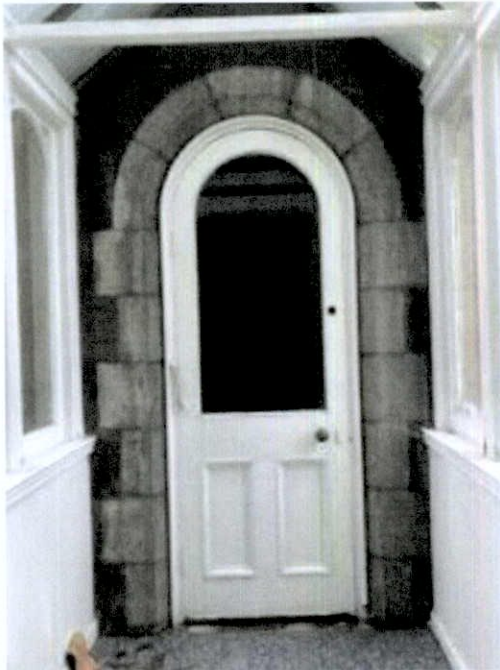


Plate 313: Link corridor to Chapel leading to choir stalls in the gallery area. Round headed panelled door with glazed upper panel.

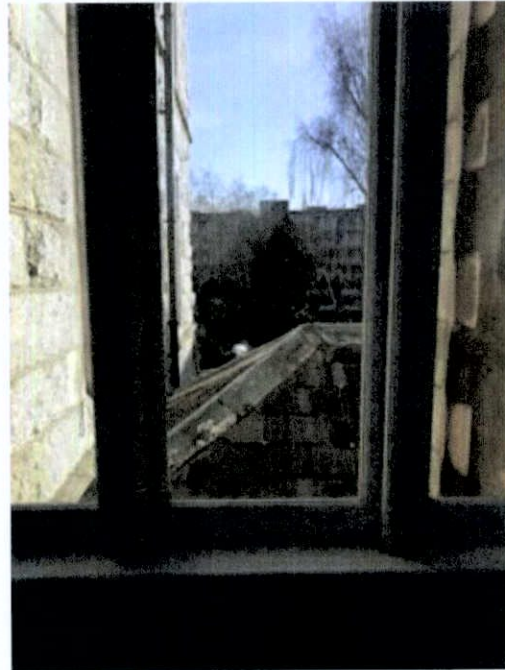


Plate 314: View east from window in linking corridor



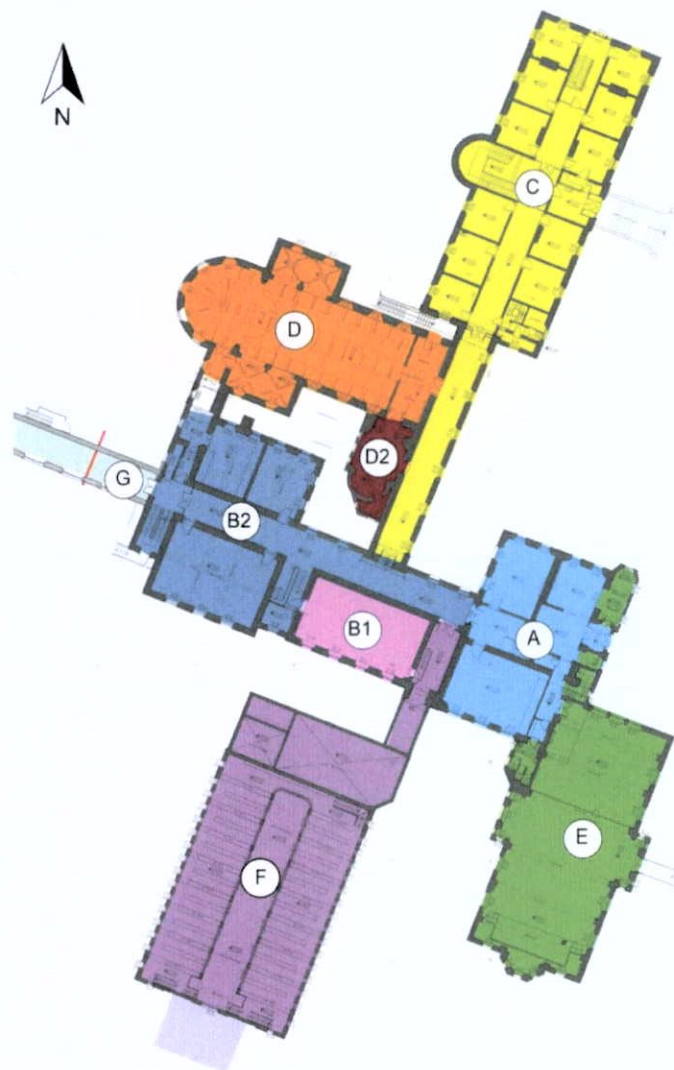
Plate 315: View west from linking corridor

APPENDIX A7.2.13

BUILDING E

FINLAY WING – INTERNAL IMAGES

- A Milltown Park House
- B Rear Extension
- C Tabor House
- D Chapel
- E Finlay Wing
- F Archive
- G Link



A7.2.13.1. Access to Entrance Level